

Wrap-A-Round

An inexpensive tool for marking straight lines around pipe, or for use as a straight edge. Made out of flexible gasket material, with good resistance to heat and cold.

All Wrap-A-Rounds are available in two colors. These designate material type and service temperature. GG (Gray) material is used for high temperature applications up to 550°F. B (Black) material has a service temperature of up to 350°F. Both material types are asbestos free.

Small and special order sizes are unmarked. All other sizes are printed with a scale in inches, pitch chart, tangent chart and other useful markings.

Wrap-A-Rounds in 3.88" and 5.00" feature a metric scale and pitch chart.



B (BLACK)		GG (GREY)		Size	Dimension	Pipe Diameter
Part No.	Item No.	Part No.	Item No.			
0720-0001	150B	0720-0027	150GG	EX-SMALL	1.94" x 2'	1" to 3"
0720-0004	152B	0720-0028	152GG	SMALL	2.50" x 2'	1" to 3"
0720-0007	164B	0720-0029	164GG	MEDIUM	3.88" x 4'	3" to 6"
0720-0010	176B	0720-0030	176GG	LARGE	3.88" x 6'	3" to 10"
0720-0013	177B	0720-0031	177GG	EX-LARGE	5.00" x 7'	4" to 12"
0720-0016	179B	0720-0032	179GG	EX-LARGE	5.00" x 9'	6" to 16"
0720-0019	184B	0720-0033	184GG	SPECIAL	3.88" x Length Desired	
0720-0022	185B	0720-0034	185GG	SPECIAL	5.00" x Length Desired	
0720-0025	187B	0720-0035	187GG	SPECIAL	7.00" x Length Desired	

Special lengths available up to a maximum of 375'

Centering Heads

Curv-O-Mark Centering Heads aid in the setting of centerlines, establishing angles and marks for butt-ins, locating points inside pipes and tanks, laying out keyways and measuring declivity.

The Standard Model is used on pipe 1/2-in. diameter and larger. It has a 4-in. Y-type head and is fitted with an adjustable dial bubble protractor (DSL) and a manually operated hardened centering pin.

The Jumbo Centering Head is for pipe 1-in. diameter and up. It has an 8-in. Y-type head, and a DSL. A springloaded hardened centering pin eliminates the need for a hammer. Just make the alignment and press the trigger.



Part No. 0721-0005



Part No. 0721-0016

Multi-Trammel Heads

For reliable marking using standard 1/2-in. pipe, heads feature radius set points cast in alignment with marking pointers for easy setting. Each is equipped with 1/4-in. screws and squared on the back side for perpendicular alignment. The stationary head holds a 1/4-in. case hardened center point. The moveable head has a 1/8-in. steel scribe hardened to 59 rockwell. The chalk holder will accept round, square or flat soapstone crayon, pencil or steel point scribe. Marks from 1-1/2-in. circle to any diameter needed, depending on length of pipe used as a trammel bar.

Heads are made from durable aluminum. Each set weighs approximately 8 oz. An allen wrench, soapstone, scribe and pointer are included.

Part No.	Stock No.	Description
0721-0005	6	Standard Centering Head
0721-0006	7	Jumbo Centering Head

Part No.	Stock No.	Description
0721-0016	19	Multi-Trammel Heads

Layout and Marking Tools

Contour Marker



Part No. 0721-0000

The Curv-O-Mark Contour Marker is a compact, timesaving tool used to lay out pipe and structural steel joints. Laterals at any angle, tees, wyes, crosses, elbows—any type or size of joint can be quickly and precisely laid out. No more complicated mathematical formulas. No more cut and try. No more needless material waste. The Contour Marker can be used to lay out pipe from diameters of 1-1/2 to 18 in., or structural steel members up to 18 in.

The Contour Marker consists of an X-shaped frame, calibrated protractor, and a triple-jointed marking arm and holder. The holder accepts a soapstone crayon (included), felt pen or pencil. The frame easily folds into a compact tool that fits into a pocket or carrying case. It can be used rightside up or upside down, depending on the direction of the line to be scribed. The protractor is calibrated on both sides—one in degrees, the other in rise-inches-per-foot—to service any type of measurement need.

The unit comes with a Structural Adaptor designed to simplify the layout of structural joints, including I-beams, angles, channels, square tubing and similar shapes. The optional Combination Adaptor Accessory allows the Contour Marker to lay out joints on larger size pipe, as well as scribe compound angles with just one setting.

The Contour Marker is made from durable, lightweight aluminum. It requires minimal maintenance, only occasional oiling of the joints, to provide long service life.

Part No.	Stock No.	Description
0721-0000	1	Standard Marker w/Structural Adaptor
0721-0001	2	Standard Combination Adaptor
0721-0002	3	Leather Carrying Case



Part No. 0721-0003

Jumbo Contour Marker

A larger version of the Contour Marker, the Jumbo Contour Marker (JCM) has been developed for use in the layout of large diameter pipe, from 8 to 48 in. With its Structural Adaptor, the JCM can be used in the layout of extremely large structural steel members up to 48 in. wide.

The JCM comes complete with a durable web strap that helps hold the unit in place during layout. A built-in adjustable dial bubble protractor ensures accurate center-line location. A soapstone crayon is included.

Like the standard model, the JCM's capability can be increased with the Combination Adaptor Accessory.

Part No.	Stock No.	Description
0721-0003	4	Jumbo Marker
0721-0004	5	Jumbo Combination Adaptor



Radius Markers

Models are available in four sizes for scribing circles up to 80-in. diameter. All are a folding type design—the three smaller models will fit conveniently into a shirt pocket. All have sturdy friction joints to maintain rigidity and accuracy, and are made from lightweight, rustproof aluminum for long wear. A soapstone crayon is already installed in each radius marker.

The scribe holder will accept round square or flat soapstone crayon, pencil, or steel point scribe.

Part No.	Stock No.	Description
0721-0010	1208	Mini-up to 8 inches radius
0721-0011	1220	Small-up to 20 inches radius
0721-0012	1224	Standard-up to 24 inches radius
0721-0013	1340	Jumbo-up to 40 inches radius



Part No. 0721-0020

Pro-Mag Burning Square

The Curv-O-Mark Pro-Mag Burning Square is a precise tool used in structural thermal cutting and layout. The tool base is a perfect square containing powerful cast-in magnets. This permits placement in any position. The tool surface is embossed with a protractor inscribed with two 90-degree quadrants graduated in 1-degree increments. The top of the tool carries an 18-in. ruler blade divided in 1/8-in. increments. The ruler can be locked in place at the desired angle setting by hand tightening of the adjustment knob.

The ruler blade is on a raised plane. This permits its use as a straight edge when flame cutting, without distortion or marring. The blade will also accept attachments or extensions that allow an overall length up to 72 in. The Burning Square is made of cast aluminum.



Part No. 0721-0025

Magnetic Burning Guide

Designed for use with a burning torch or as a straight edge, the Burning Guide is cast of strong, durable material to withstand heat and spatter. The tool's base has three 30-pound pull cast-in magnets for use in any position. A 24-inch blade on a raised plane is standard.

Part No.	Stock No.	Description
0721-0020	22	Pro-Mag Burning Square
0721-0025	28	Magnetic Burning Guide
Attachments for Pro-Mag Burning Square & Magnetic Burning Guide		
0721-0026	29	34-Inch Overall Length (In Two Sections)
0721-0027	30	48-Inch Overall Length (In Two Sections)
0721-0028	31	72-Inch Overall Length (In Two Sections)



Part No. 0721-0008

Fitter Welder Protractor

This 90-degree protractor has a matching locking lever to set and hold the tool at the desired angle. It is equipped with a 5/8 in. by 10 in. tapered arm to complete finding of angles or desired bends, or to determine any portions of elbows.

The tool is mounted in a 3/4-in. wide frame with a 3/8-in. by 6-in. cast-in rod. It comes with a 25-pound pull magnetic base for holding the protractor frame in position. The unit can be used manually or with a magnetic base, as shown above.

Part No.	Stock No.	Description
0721-0008	9	Fitter Welder Protractor



Part No. 0721-0014

Circle-Ellipse Projector

Perfect circles, ellipses or oblong circles can now be easily made on any irregular flat or round surface. The Projector features a protractor with sliding rods and an adjustable lever to lock in the specified layout. A strong, 20-pound pull magnetic base holds the Projector in position during layout. A durable web strap (included) holds the unit secure on non-magnetic surfaces and can be used on either side of the vertical column. The Projector can also be used to lay out lateral intersections of different diameter pipes, or to project circles from 1-1/2 to 18 in. diameter on flat surfaces intersecting at angles from 0 to 70 degrees from vertical. Attachments to develop larger diameter circles are available. The Projector is equipped with a soapstone crayon and also works with chalk, pencil or steel scribe.

Part No.	Stock No.	Description
0721-0014	14	Circle Ellipse Projector

Levels



Universal Level

The Curv-O-Mark Universal Level is a multi-purpose tool. The unit features a 360-degree adjustable protractor dial bubble (DSL) that ensures accurate leveling and permits the following additional uses:

- Setting a predetermined pitch of a string of pipe
- Setting the angle of laterals to a precise degree
- Trueing vertical runs
- Two-holing flanges

The Level has two cast-in 25-pound magnets (exerting a 50-pound pull) to securely hold the unit in place on any steel surface, including the underside of a pipe or beam. This permits hands-free leveling, a welcome aid in tight spots. And, since the bubble is mounted on a protractor dial, the Level may be used in any position and still read accurately.

While one face of the Level is magnetic, both faces have deep, cast-in grooves that make the Level self-centering on the contour of the pipe. Because the magnets are cast in, they do not interfere with the use of the Level on nonmagnetic materials, such as aluminum, copper, lumber, stone or other materials requiring leveling.

For aligning pipe flanges (two-holing), the Level comes with a two-threaded, self-aligning conical spacer and conical nut and bolt units. These are designed to fit any size bolt hole spaced between 2-1/4 in. to 8-in. centers on flanges. This permits the orientation of flange bolt holes for any size pipe.

Designed primarily for pipefitting applications, the Universal Level is a valuable tool for any craft required to use a level or a plumb bob:

- For structural ironworkers, the powerful holding magnets provide an extra hand
- Electricians will find the Level useful in laying out and lining up heavy conduit
- With the aid of a handy conversion chart, carpenters can use the Level for the layout of roof rafters.

Part No.	Stock No.	Description
0721-0030	33	Universal Level



Part No. 0721-0007

Pro-Mag Level

A lightweight, easy to use tool for determining angles, the Pro-Mag Level has two cast-in 25 pound pull magnets that hold securely to any steel surface. The unit has a 360 degree adjustable DSL with two 90 degree quadrants graduated in 2-1/2 degree increments. Also cast in are tables used to convert degree-of-angle to rise in inches per foot or millimeters per meter. A groove on the bottom edge permits use on a small pipe.

The Pro-Mag Level:

- 9 inches long
- 2 inches high
- 3/4 inch thick
- Made from cast aluminum

The unit is ideal for pipefitter, welder, jig builder or anyone who has to determine angles or do setup work.

Part No.	Stock No.	Description
0721-0007	8	Pro-Mag Level



Part No. 0721-0017

Dial-Angle Flange Level

A versatile tool that can be used as a dial degree utility level or, with attachments, for two-holing flange alignment.

The unit is made of cast aluminum with a protective housing containing an adjustable DSL. It is also fitted with a threaded, self-aligning conical spacer and conical nut and bolt units for fastening the Level to a pipe flange. One of the nut and bolt units is stationary, while the other slides up to 5-1/2 in. along a slot in the level to accommodate various flange bolt hole spacings from 2 to 5-1/2 inches.

The body of the tool is 1/2-in. thick with a machined surface. The level bubble is protected from weld splatter and breakage with a built-in housing around the DSL.

Part No.	Stock No.	Description
0721-0017	20	Dial-Angle-Flange Level



Part No. 0721-0029

Square not included

Flange Aligner Base

Remove the difficulty of flange aligning and squaring with a simple tool that holds a square in the needed position without tying up one's hands.

The Curv-O-Mark Aligner Base is notched at either end for ease in aligning on the centerline of the pipe and has two 25-pound pull, cast-in magnets for holding either a flat horizontal or vertical position. The Base will accept either leg of a standard or combination square and will work on pipe diameters from 1 in. on up, requiring only the extension of the legs of the square being used to accommodate larger diameters.

The Flange Aligner Base is made from lightweight, durable aluminum.

Part No.	Stock No.	Description
0721-0029	32	Flange Aligner Base



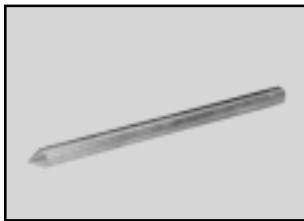
Part No. 0721-0009

Pipe Flange Aligners

Fast, accurate pipe construction is possible with this self-determining flange aligning tool. The Aligner inserts easily into pipe, centers snugly against the inside pipe diameter and automatically aligns with the pipe axis. The Pipe Flange Aligner is quickly adjustable for all types of flanges or pipe sizes ranging from 3 to 12 in. diameter.

Part No.	Stock No.	Description
0721-0009	10	Pipe Flange Aligner

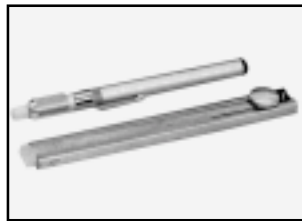
Accessories and Replacement Parts



Part No. 0722-0001

Centering Pin

A hardened steel pin for use with the Curv-O-Mark Standard Centering Head. Suitable for marking, but should not be used as a center punch.



Part No. 0721-0023 Round Crayon Holder
Part No. 0721-0024 Flat Crayon Holder

Soapstone Holders

For protection of soapstone crayons, a choice of two, durable anodized aluminum cases are available. The design allows the use of over 90 percent of the crayon.

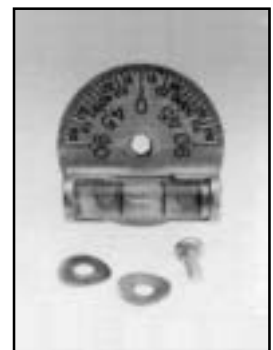


Part No. 0722-0002

Centering Bushing Set

Replacement Parts for 0721-0017 and 0721-0030

- Dual Thread Bolt
- Spacer 5/16 inch x 16 Threads
- Knob Nut 1/4 inch x 20 Threads



Part No. 0722-0000

Dial-Set-Level

The DSL is an adjustable bubble protractor used with a number of Curv-O-Mark tools (0721-0003, 0721-0005, 0721-0006, 0721-0007, 0721-0017, 0721-0030). The protractor covers 180 degrees through two 90 degree quadrants, reading in 2-1/2 degree increments. The bubble is cast in the aluminum dial.