

Pipe Cutting And Beveling Machines



Cuboid Spacer System



Stored Spacers



2DH Boomer Strap



Each machine is constructed of lightweight, hard-anodized aluminum, assuring durability and easy transportation to every job site. Anywhere you go you will be able to cut and bevel 2" to 56" pipe accurately, swiftly and economically, even under the toughest conditions.

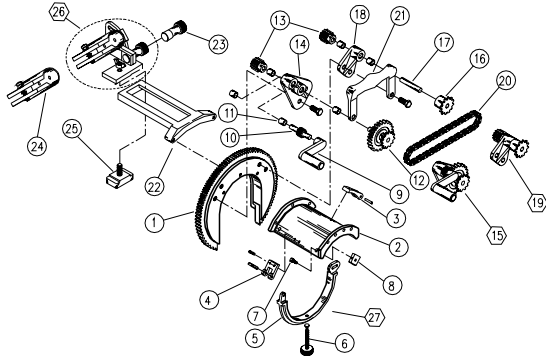
- Each ring gear and saddle is precisely machined, assembled and calibrated to $\pm .015$ in concentricity and squareness.
- Each machine is equipped with a rear-mounted short saddle for cutting and beveling in tight locations.
- The rear-mounted saddle allows precise back-beveling operations without sacrificing the machine's integrity.
- The machines' unique split horseshoe design permits easy placement over pipe sections.
- A quick operating boomer assembly secures each machine to the pipe during the entire 360-degree rotation; no repositioning is necessary.
- The patented Cuboid Spacer System minimizes downtime by keeping the spacers on the machine



Protect your investment during transportation and storage by using our lightweight aluminum storage boxes. They prevent damage to the machines and their precision parts. These storage boxes are for all Models No. 0 through No. 6 Standard Beveling Machines.

Part Number	Model Number	Standard Pipe Size				Net Weight		Shipping Weight		Shipping Dimensions	Manual	Motorized	Cuboid Spacer (PATENTED)
		INCHES=Nominal Pipe Size	MILLIMETERS=Pipe O.D.	lbs.	kg.	lbs.	kg.						
HM00	0	2" 60.32	2.5" 73.02	3" 88.90	4" 114.30	7.50	3.37	12	5.40	9 x 11 X 11	Standard	Optional	Standard
HM01	1	3" 88.90	4" 114.30	6" 168.27	8" 219.07	16	7.20	23	10.35	13 x 16 x 17	Standard	Optional	Standard
HM02	2	7" 193.67	8" 219.07	10" 273.05	12" 323.85	23	10.35	35	15.75	15 x 22 x 22	Standard	Optional	Standard
HM03	3	14" 355.60	16" 406.40	18" 457.20	20" 508.00	51	22.95	77	34.65	13 x 34 x 34	Standard	Optional	Standard
HM04	4	20" 508.00	22" 558.80	24" 609.60	26" 660.40	81	36.45	118	53.10	14 x 36 x 45	Standard	Optional	Standard
HM30	30	24" 609.60	26" 660.40	28" 711.20	30" 762.00	92	41.40	133	59.85	14 x 38 x 48	Standard	Optional	Standard
HM05	5	30" 762.00	32" 812.80	34" 863.60	36" 914.40	145	65.25	250	112.50	16 x 48 x 61	Standard	Optional	Standard
HM42	42	36" 914.40	38" 965.20	40" 1016.00	42" 1066.80	185	83.25	320	144.00	23 x 53 x 63	Standard	Optional	Standard
HM06	6	42" 1066.80	44" 1117.60	46" 1168.40	48" 1219.20	220	99.00	350	157.50	24 x 55 x 72	Standard	Optional	Standard

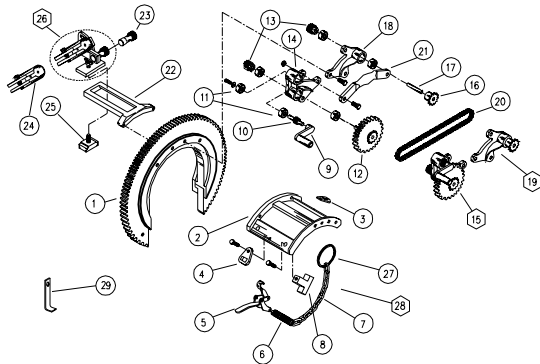
Model 0



* Cuboid Spacers are used on all Model 0 machines with SN#63337-C4 and up. For all other machines (unless modified with new saddle), old-style spacers will be required. Order part no. 36-0 Spacer Bolt Assembly (consists of two spacers each for 2" and 3" pipe.)

Item No.	Model 0 Part No.	Description	Qty Req
1	2A3 & 4-0	Ring Gear Assembly	1
2	02-0	Saddle Assembly	1
3	2DP-0	Boomer Strap Eye (Pivot)	1
4	2DL-0	Boomer Strap Eye (Latch)	1
5	20-0	Boomer Strap	1
6	27-0	Boomer	1
7	13K-0	Knurled Thumb Screw	4
8	13C-0*	Cuboid Spacer	4
9	8-0-1	Crank	1
10	8C-0	Crank Pinion	1
11	26-0	Bearing	6
12	8A10 & 12-0	Crank Gear Axle Assembly	1
13	09-0	Pinion Gear	2
14	18-0	Double Bearing Bracket	1
15	18A-0	Double Bearing Bkt. Assembly (Consists of Items 9-14)	1
16	14-0	Sprockets	1
17	8A-0	Gear Axle	1
18	17-0	Single Bearing Bracket	1
19	17A-0	Single Bearing Bkt. Assembly (Consists of Items 11,13,16-18)	1
20	12A-0	Top Roller Chain	1
21	23-0	Handle	1
22	01-R	Torch Arm	1
23	007F	Knob and Cam Assembly	1
24	07CS	Torch Holder	1
25	0006	Base for 5C	1
26	005C	Torch Carrier	1
27	30-0	Boomer Assembly (Consists of Items 3-6)	1

Model 1 and 2

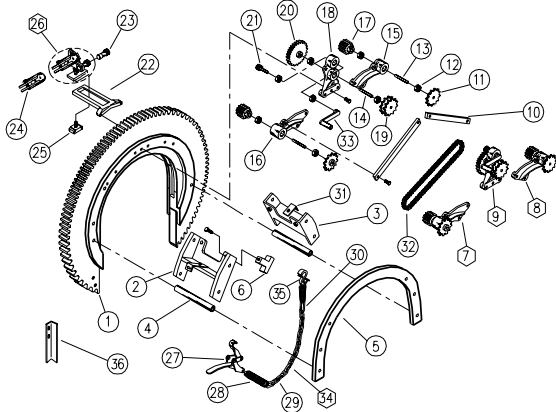


* Cuboid Spacers are used on all Model 1 machines with SN#64577-C8 and up. For all other machines (unless modified with new saddle), old-style spacers will be required. Order part no. 36-1 Spacer Bolt Assembly (consists of four spacers each for 4", 6" and 8" pipe.)

** Cuboid Spacers are used on all Model 2 machines with SN#64709-C12 and up. For all other machines (unless modified with new saddle), old-style spacers will be required. Order part no. 36-2 Spacer Bolt Assembly (consists of four spacers each for 8", 10" and 12" pipe.)

Item No.	Model 1 Part No.	Model 2 Part No.	Description	Qty Req
1	2A3 & 4-1	2A3 & 4-2	Ring Gear Assembly	1
2	02-1	02-2	Saddle Assembly	1
3	2DH-1-2	2DH-1-2	Boomer Strap Eye	1
4	2D-1-2	2D-1-2	Boomer Strap Eye	1
5	27-1-6	27-1-6	Boomer	1
6	24-1-2	24-1-2	Boomer Spring	1
7	20-1	20-2	Boomer Chain	1
8	13C-1*	13C-2**	Cuboid Spacer	4
9	8-0-1	08-2	Crank	1
10	8C-1-2	8C-1-2	Crank Pinion	1
11	26-1-3	26-1-3	Bearing	6
12	8A10&12-1-2	8A10&12-1-2	Crank Gear Axle Assembly	1
13	09-1	9-2-3	Pinion Gear	2
14	18-1	18-2	Double Bearing Bracket	1
15	18A-1	18A-2	Double Bearing Bkt. Assembly (Consists of Items 9-14)	1
16	14-1-2	14-1-2	Sprockets	1
17	8A-1-3	8A-1-3	Gear Axle	1
18	17-1	17-2	Single Bearing Bracket	1
19	17A-1	17A-2	Single Bearing Bkt. Assembly (Consists of Items 11,13,16-18)	1
20	12A-1	12A-2	Top Roller Chain	1
21	23-1	23-2	Handle	1
22	01-R	01-R	Torch Arm	1
23	007F	007F	Knob & Cam Assembly	1
24	07CS	07CS	Torch Holder	1
25	0006	0006	Base of 5C	1
26	005C	005C	Torch Carrier	1
27	21-1-2	21-1-2	Key Ring	1
28	30-1	30-2	Boomer Assembly (Consists of Items 5-7,27)	1
29	16-1	16-2	Foot	2

Model 3



* Cuboid Spacers are used on all Model 3 machines with SN#66260-C20 and up. For all other machines (unless modified with new saddle arms), old-style spacers will be required. Order part no. 36-3 Spacer Bolt Assembly (consists of four spacers each for 14", 16", 18" and 20" pipe.)

Item No.	Model 3 Part No.	Description	Qty Req
1	2A3 & 4-3	Ring Gear Assembly	1
2	2FL-3	Saddle Arm (Left)	1
3	2FR-3	Saddle Arm (Right)	1
4	2E-3	Saddle Spacer Stud	2
5	2C-3	Back Saddle Ring	1
6	13C-3*	Cuboid Spacer	4
7	17AL-3	Single Bearing Bkt. Assembly-L (Consists of Items 11-13,16,17)	1
8	17AR-3	Single Bearing Bkt. Assembly-R (Consists of Items 11-13,15,17)	1
9	18A-3	Double Bearing Bkt. Assembly (Consists of Items 12,14,18-21,33)	1
10	29-3	Tie Rod	2
11	14-3	Sprockets	2
12	26-1-3	Bearing	8
13	8B-3	Pinion Gear Axle	2
14	8A-1-3	Gear Axle	1
15	17R-3	Single Bearing Bracket (Right)	1
16	17L-3	Single Bearing Bracket (Left)	2
17	9-2-3	Pinion Gear	2
18	18-3	Double Bearing Bracket	1
19	12-3	Sprocket (Double)	1
20	10-3	Crank Gear	1
21	8C-3	Crank Pinion	1
22	01-R	Torch Arm	1
23	007F	Knob & Cam Assembly	1
24	07CS	Torch Holder	1
25	0006	Base for 5C	1
26	005C	Torch Carrier	1
27	27-1-6	Boomer	1
28	24-3-6	Boomer Spring	2
29	20-3	Boomer Chain	1
30	0021	Boomer Strap Snap	2
31	2D-3-30	Boomer Strap Eye	2
32	12A-3	Top Roller Chain	2
33	8-3-6	Crank	1
34	30-3	Boomer Assembly (Consists of Items 27-30)	1
35	0025	Boomer Hook	1
36	16-3-30	Foot	2

Band Type Pipe Cutting & Beveling Machine



Band Style Cutting 48" Pipe

The H&M Band-Type Pipe Cutting and Beveling Machine is fast, accurate and versatile. A single operator can position the band and beveling machine head on 48" diameter pipe in approximately five minutes. Each H&M stainless steel band overlaps numerous pipe sizes making the bands very economical.

- Automatically compensates for oversized or undersized pipe.
- Unaffected by dope or coating on the pipe.
- Accurate-Overlapping squares up the band.
- Band conforms to out-of-round pipe.



The H&M motorized beveling machine head incorporates a rugged, lightweight, cast aluminum chassis that offers the following features:

- Portable (weighs only 18 lbs.)
- Designed to work on all H&M stainless steel bands
- Equipped with a 90-volt DC motor, (220 volt optional)
- Variable speed control box - forward and reverse
- Speed range of 2 IPM to 24 IPM
- Plasma speeds (optional)

The H&M Storage Box protects your investment with rugged construction, storage for one beveling machine head and several bands, plus compartments for torches, cutting tips, strikers, tip cleaners and other tools.

Bands

Each band includes a drive chain and a coupling - larger bands quoted upon request

Part No.	Description	Pipe Sizes		Shipping Weight		Shipping Dimensions	
		Inches	mm	lbs	kg	Inches	mm
OBMH	Beveling Machine Head			20	9.05	18 x 12 x 10	450 x 300 x 250
BAND14	14" Band	10 to 14	250-350	6	2.71	12 x 12 x 10	300 x 300 x 250
BAND20	20" Band	14 to 20	350-500	8	3.62	12 x 12 x 10	300 x 300 x 250
BAND26	26" Band	20 to 26	500-650	9	4.07	12 x 12 x 10	300 x 300 x 250
BAND30	30" Band	26 to 30	650-750	10	4.52	12 x 12 x 10	300 x 300 x 250
BAND36	36" Band	30 to 36	750-900	12	5.43	20 x 20 x 13	500 x 500 x 325
BAND42	42" Band	36 to 42	900-1050	14	6.33	20 x 20 x 13	500 x 500 x 325
BAND48	48" Band	42 to 48	1050-1200	15	6.79	20 x 20 x 13	500 x 500 x 325
BAND56	56" Band	48 to 56	1200-1400	16	7.24	20 x 20 x 13	500 x 500 x 325
BAND60	60" Band	56 to 60	1400-1500	17	7.69	20 x 20 x 13	500 x 500 x 325
BAND64	64" Band	60 to 64	1500-1600	18	8.14	20 x 20 x 13	500 x 500 x 325
BAND68	68" Band	64 to 68	1600-1700	19	8.60	20 x 20 x 13	500 x 500 x 325
BAND72	72" Band	68 to 72	1700-1800	20	9.05	20 x 20 x 13	500 x 500 x 325
BAND76	76" Band	72 to 76	1800-1900	21	9.50	20 x 20 x 13	500 x 500 x 325
BAND80	80" Band	76 to 80	1900-2000	22	9.95	20 x 20 x 13	500 x 500 x 325
BAND84	84" Band	80 to 84	2000-2100	23	10.40	20 x 20 x 13	500 x 500 x 325
BAND90	90" Band	84 to 90	2100-2250	24	10.86	20 x 20 x 13	500 x 500 x 325
BAND96	96" Band	90 to 96	2250-2400	25	11.31	20 x 20 x 13	500 x 500 x 325
BANDBox	Storage Box			38	17.25	24 x 24 x 10	600 x 600 x 250

Part No.	Size	Weight
GEN02	2"	12#
GEN02.5	2.5"	17#
GEN03	3"	17#
GEN04	4"	19#
GEN05	5"	33#
GEN06	6"	32#
GEN08	8"	33#
GEN10	10"	51#
GEN12	12"	53#
GEN14	14"	70#
GEN16	16"	102#
GEN18	18"	110#
GEN20	20"	120#
GEN24	24"	126#
GEN28	28"	148#
GEN30	30"	160#

General Pipe Clamps

General Standard, Hydraulic and Ratchet Pipe Clamps for 2" to 60" diameter pipe. Each is hinged for easy positioning around the pipe and is available with flat or arched cross bars. The Standard Pipe Clamp features a lever and a cam to tighten the clamp around both ends of adjoining pipe.

General Pipe Clamps are designed for the sole purpose of aligning pipe ends while welding. They are NOT to be used to support the weight of the pipeline while lifting or moving, nor are they to be used with shims, wedges or cheaters.

Note: All part numbers listed are General Standard Style with flat cross bars.

General Pipe Dolly

This one piece body with adjustable rollers easily accommodates pipe sizes 3" to 30". Using a pair of pipe dollies allows the pipe to be safely supported and rotated, assisting in multiple welding tasks.



Standard Pipe Clamp No Tack

Ratchet Pipe Clamp Flat

Hydraulic Pipe Clamp No Tack



GENDolly

Flat Cross Bar

Arched Cross Bar (No Tack)

Adjustable Pipe Clamp / Master Chain Clamp / Tool Kits

Adjustable Pipe Clamp

The adjustable pipe clamp is manufactured using ductile cast iron (APC16) or aluminum (APC16-A). The pipe alignment V's are cast into the clamp and precisely machined, assuring perfect alignment of pipe ends. The clamp is lightweight (APC16 - 31 lbs. net, APC16-A - 16 lbs.) and portable. A convenient carrying handle has been cast into the pipe clamp, allowing easy, safe transportation to any job site. One person can position the clamp and start welding in about two minutes for most applications and pipe sizes. Comes complete and ready to align 2" to 16" diameter pipe. One adjustable clamp does the work of 12 cage-type pipe clamps. Acme 3/4-6" threaded bolts and nuts are used to tighten the chain around pipe. Each adjusting nut is fitted with its own handle. No extra wrenches or ratchet handles are required. The acme threaded bolts, nuts and chain are captive to the pipe clamp, eliminating lost or misplaced items.



Part No. APC16-A (Aluminum)

Part No. APC16 (Cast Iron)

Master Chain Clamp

A versatile clamping system designed to increase productivity. One person can quickly and safely perform perfect fit-ups of flanges, tees and elbows in minutes. Each Master Chain works 4" to 16" diameter pipe fittings. Additional chain links and jackbars can be added for larger pipe sizes. The clamp weighs 28 lbs. when fully assembled, but can be streamlined when working smaller sized pipe. Set up, positioning and alignment for welding is now faster,



Part No. CC-HD

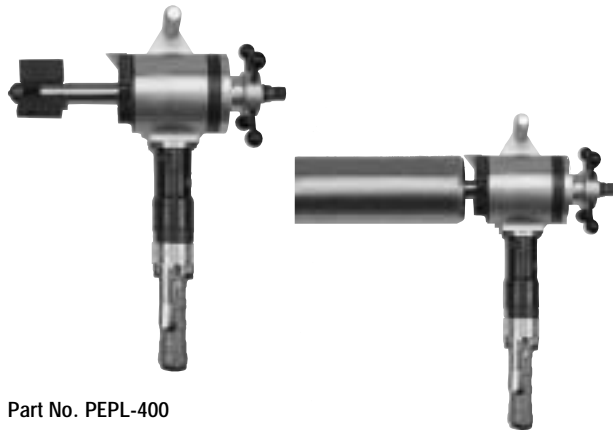


Quick-Acting Flange Pins

Welding occurs in minutes with very little fit-up time. Just tilt the knob to bypass the flange pin threads, then straighten the knob to grip the threads for tight, positive clamping. Removal is just as quick and easy. Loosen the knob, tilt it and remove. Endless threading and unthreading of the flange pins has been eliminated. H&M's precision, conical flange pins provide perfect centering on 5/8" to 1-1/2" bolt holes.

Part No. QAFP (Mild Steel)

Part No. QAFP-S (Stainless Steel)



Part No. PEPL-400

Pipe-End-Prep Lathe 400

The perfect tool for beveling, facing and counterboring 2" to 4" pipe or tube. The PEPL-400 will place bevels, lands and counterbores on both ferrous and nonferrous materials up to SCH 160. They are pneumatic-driven, lightweight, portable and come complete with the following features and specifications:

- 2" to 4" pipe capacity (1.25" ID to 4.5" ID).
- 1-5/8 HP heavy-duty pneumatic motor 55 cfm & 90 psi
- One mandrel fits 2" to 4" pipe
- 4" cutter head
- Bevel, face and counterbore "simultaneously"
- Adjustable "lock in" torque - accepting mandrel eliminates backlash & chatter
- One each 37.5° bevel bit (PB-0333) and facing bit (PB-0258)
- Heavy-duty storage case
- Portable (net weight = 24 lbs.)
- Operation Manual

Tool Bits for PEPL-400/Tri Tool 203B/Wachs SDB-106/Otto Tool PBM-4000

Part No.	Type	Size
PB-0167	37.5° bevel	.83" to 2.00"
PB-0333	37.5° bevel	2.00" to 3.50"
PB-0944	37.5° bevel	3.00" to 4.00"
PB-0169	Facing bit	(0.750" high) 0.83 to 2.00"
PB-0257	Facing bit	(0.875" high) 1.50 to 3.00"
PB-0258	Facing bit	(01.00" high) 3.00 to 4.00"
PB-0168	4° chamfer bit	
PB-2566	25.5° "J" bevel	

Optional Parts for PEPL-400

Part No.	Type	Size
PBM-4370A	Ratchet handle	
PBM-4700	Small cutter head	0.83" to 2.75"
PBM-4710	Large cutter head	1.00" to 4.00"
PBM-4915	Small mandrel	0.83" to 1.00" I.D.
PBM-AF	Air filter / Lubrication	
PBM-4916	Heavy-duty storage case	
PBM-4830A	Centering block	1.250" - 1.750"
PBM-4830B	Centering block	1.625" - 2.125"
PBM-4830C	Centering block	2.000" - 2.500"
PBM-4830D	Centering block	2.375" - 2.875"
PBM-4830E	Centering block	2.750" - 3.250"
PBM-4830F	Centering block	3.125" - 3.625"
PBM-4830G	Centering block	3.500" - 4.000"
PBM-4830H	Centering block	3.750" - 4.250"
PBM-4912	Thin wall kit	2.000" - 4.000" SCH 5 to 10
PBM-4910	Complete elbow mandrel	



Pipe-End-Prep Lathe 800



Part No. PEPL-800



Pipe-End-Prep Lathe 800

Is the perfect tool for beveling, facing and counterboring 3" to 8" pipe or tube. The PEPL-800 will place bevels, lands and counterbores on both ferrous and nonferrous materials. It is lightweight, portable and comes with the following features and specifications

- 3" to 8" pipe capacity (3" SCH 40 [3.068 ID] to 8" SCH40 [7.981 ID]).
For schedule 5 and 10 THIN WALL SLEEVES must be ordered.
- 2-1/2 HP heavy-duty pneumatic motor
- One mandrel fits 3" to 8" pipe
- Two sets of tool bit holders (one set 3" to 6" and one set 4" to 8")
- Bevel, face and counterbore "simultaneously"
- Adjustable "lock in" torque-accepting mandrel eliminates backlash and chatter
- One each 37-1/2° bevel bit and facing bit
- Operation manual



Portable heavy-duty wood storage case
Net weight = 58 lbs.

Tool Bits for PEPL-800/Tri Tool 206 and 21/Otto Tool PBM-8000

Mild Steel Applications

Part No.	Type	Size
PB-2905	37.5° bevel	3.00" - 7.00"
PB-2906	37.5° bevel	6.00" - 8.00"
PB-2904	Facing bit	
PB-2907	C bore 14.5°	3.00" - 5.00"
PB-2908	C bore 14.5°	4.50" - 6.50"
PB-2909	C bore 14.5°	6.00" - 8.00"
PB-2910	C bore 10.0°	3.00" - 5.00"
PB-2911	C bore 10.0°	4.50" - 6.50"
PB-2912	C bore 10.0°	6.00" - 8.00"
PB-2915	"J" bevel 25°	3.00" - 7.00"
PB-2916	"J" bevel 25°	6.00" - 8.00"

Stainless Steel Application

Part No.	Type	Size
PB-2918	37 1/2° bevel	3.00" - 7.00"
PB-2919	37 1/2° bevel	6.00" - 8.00"
PB-2917	Facing bit	1.63" - 6.63"
PB-2920	C bore 14.5°	3.00" - 5.00"
PB-2921	C bore 14.5°	4.50" - 6.50"
PB-2922	C bore 14.5°	6.00" - 8.00"
PB-2923	C bore 10.0°	3.00" - 5.00"
PB-2924	C bore 10.0°	4.50" - 6.50"
PB-2925	C bore 10.0°	6.00" - 8.00"
PB-2928	"J" bevel 25°	3.00" - 7.00"
PB-2929	"J" bevel 25°	6.00" - 8.00"

Optional Parts

Part No.	Type	Size
PBM-6004	Replacement ramp	
PBM-6011	Cutter head tool block	2.000" - 6.000"
PBM-6012	Cutter head tool block	4.000" - 8.000"
PBM-6016A	Centering block	3.300" - 3.900"
PBM-6016B	Centering block	3.380" - 4.400"
PBM-6016C	Centering block	4.400" - 5.000"
PBM-6016D	Centering block	5.000" - 5.600"
PBM-6016E	Centering block	5.600" - 6.200"
PBM-6016F	Centering block	6.200" - 6.800"
PBM-6016G	Centering block	6.800" - 7.400"
PBM-6016H	Centering block	7.400" - 8.000"
PBM-6016I	Centering block	8.000" - 8.600"
PBM-8910	Complete elbow mandrel	
PBM-8920	Small mandrel	1.900" - 3.000"
PBM-AF	Air filter/Lub. regulator	