

## Electrode Holders

### TwecoTong® Electrode Holders

Part Number	Model Number	Amperage Capacity	Body Alloy	Electrode Capacity	Cable Conn Capacity	English Length	Metric Length
9110-1101	A-532	200	98% Copper	thru 5/32"	Ball-Point thru 2/0	8-1/2"	216 mm
9110-1102	A-316	250	98% Copper	thru 3/16"	Ball-Point thru 2/0	9-1/4"	235 mm
9110-1103	A-732	300	98% Copper	thru 7/32"	Ball-Point thru 2/0	10"	254 mm
9110-1104	A-14	350	98% Copper	thru 1/4"	Ball-Point thru 4/0	11"	279 mm
9110-1105	A-14-HD	400	98% Copper	thru 1/4"	Double Ball-Point thru 4/0	12"	305 mm
9110-1106	A-38-HD	500	98% Copper	thru 3/8"	Double Ball-Point thru 4/0	13-1/4"	336 mm



Twecotong Electrode Holders feature reversible top and bottom "Super-Mel" Insulators. Efficient 6-position jaw patterns and fully insulated, protected springs. Ball point cable connection is also featured.

Part Number	Model Number	Description	AMP Capacity	Electrode Capacity	Cable Conn Capacity	English Length	Metric Length
9120-1000	04TT	Tweco-Tite Holder	400	1/16" thru 1/4"	Thru 3/0	9"	229 mm

### TwecoTong® Electrode Holder Parts



\*Note: Part No.-4 Lower Body Tong without insulation requires insulation for operation

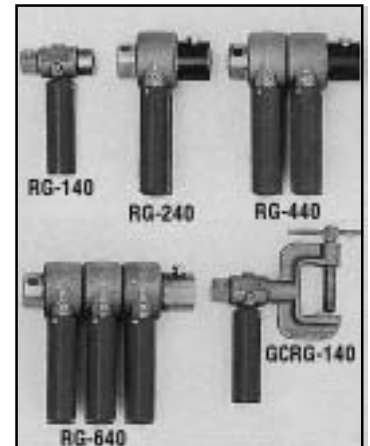
\*\*Note: Part No. -50 Upper Tong is without insulation and requires Part No. -51 Upper Tong insulation for proper operation.

Description	A-532 (Stock) Part No.	A-316 (Stock) Part No.	A-732 (Stock) Part No.	A-14 (Stock) Part No.	A-14-HD (Stock) Part No.	A-38-HD (Stock) Part No.
Tip Insulation w/Screw	(9910-2102) A-532-1P	(9910-2102) A-532-1P	(9910-2302) A-732-1P	(9910-2302) A-732-1P	(9910-2302) A-732-1P	(9910-2602) A-38-HD-1P
Body Insulation	(9910-2103) A-532-3	(9910-2103) A-532-3	(9910-2103) A-532-3	(9910-2403) A-14-3	(9910-2403) A-14-3	(9910-2603) A-38-HD-3
Molded Handle	(9910-2107) A-532-7	(9910-2207) A-316-7	(9910-2307) A-732-7	(9910-2407) A-14-7	(9910-2507) A-14-HD-7	(9910-2607) A-38-HD-7
Handle Screws	(9910-2712) AL-300-12	(9910-2712) AL-300-12	(9910-2712) AL-300-12	(9910-2712) AL-300-12	(9910-2712) AL-300-12	(9910-2712) AL-300-12
Cable Connector Screw	(9910-2124) A-532-24	(9910-2124) A-532-24	(9910-2124) A-532-24	(9910-2424) A-14-24	(9910-2424) A-14-24	(9910-2424) A-14-24
Upper Tong Insulation	N/A	N/A	N/A	(9910-2451) A-14-51	(9910-2451) A-14-51	(9910-2651) A-38-HD-51
Fibre Strip Insulation	N/A	N/A	N/A	(9910-2452) A-14-52	(9910-2452) A-14-52	(9910-2652) A-38-HD-52

## Heavy Duty Rotary Ground Devices

TWECO Roto-Ground is a highly efficient device for grounding weldments while being rotated on turning rolls or positioners. The 2" shaft shoulders up to a steel nut which the user welds to his rotating work or fixture. TWECO Roto-Grounds have no brushes, springs or mercury. A simple tension adjusting bolt provides maximum efficiency.

Part Number	Model Number	Amperage Capacity	Cable Capacity	Number Of Heads	Shaft Stud	English Length	Metric Length
9250-1114	RG-140	400	1-4/0	1	3/4" NC	8"	203 mm
9250-1123	RG-230	600	2-3/0	1	1-1/8" NC	10-1/4"	260 mm
9250-1124	RG-240	800	2-4/0	1	1-3/8" NC	10-5/8"	270 mm
9250-1144	RG-440	1500	4-4/0	2	1-3/8" NC	10-5/8"	270 mm
9250-1164	RG-640	2000	6-4/0	3	1-3/8" NC	10-5/8"	270 mm
9210-1314	GCRG-140	400	1-4/0	1	3/4" NC		



## Tweco Roto-Work Grounding Clamps

TWECO Roto-Work Ground Clamps are designed primarily to work in conjunction with the Tweco Roto-Ground Device. However, they may also be used for other high amperage grounding applications. The Roto-Ground shaft screws into the tapped back of the Roto-Work Clamp. The clamp is quickly attached or moved from one rotating weldment or fixture to the other without removing the Roto-Ground from it. Saves welding down time. Roto-Work Clamps are made from 98% copper alloy. They come in 600, 1200 and 2000 ampere capacity. Number WCRG-600 ampere and WCRG-1200 ampere have single tightening screws. Number WCRG-2000 has two tightening screws. Number WCRG-600 works only with No. RG-230 due to its smaller shaft size. Large tightening screws and ample contact surface area provide cool, efficient operation.



Part Number	Model Number	Amperage Capacity	Fits Roto-Ground	Clamp Contact	Throat Height	Throat Dept	Over-all Height	Over-all Width	Tapped For
9255-1106	WCRG-600	600	RG-230	6-1/4" sq/in	2-1/2"	2-1/2"	5-3/4"	2-1/2"	1-1/8" NC
9255-1112	WCRG-1200	1200	RG-240/440	9 sq/in	3"	3"	6-3/4"	3"	1-3/8" NC
9255-1120	WCRG-2000	2000	RG-440/640	12 sq/in	3"	3"	6-3/4"	4"	1-3/4" NC
9255-1075	GC-600-75	Clamp Only - Tapped 3/4" for RG-140 Roto-Ground Only							

## Tweco Ground Clamps

Part Number	Model Number	Amperage Capacity	Jaw Opening	Cable Conn Capacity	English Length	Metric Length
9205-1120	GC-200	200	1" - Depth 3"	Ball-Point thru 1/0	6"	157 mm
9205-1130	GC-300	300	1-1/2" - Depth 4"	Ball-Point thru 3/0	8-1/2"	216 mm
9205-1150	GC-500	500	2" - Depth 5-1/4"	Ball-Point thru 4/0	10"	254 mm
9205-1230	SGC-300	300	2" - Depth 1-3/4"	1/2" Stud Connection	9"	228 mm
9205-1250	SGC-500	500	2" - Depth 1-3/4"	1/2" Stud Connection	9"	228 mm
9205-1320	FGC-200	200	5/8" - Depth 2"	Ball-Point thru 4/0	5"	127 mm
9205-1330	FGC-300	300	1" - Depth 3-1/2"	Ball-Point thru 4/0	7-1/4"	184 mm
9205-1350	FGC-500	500	1-1/2" - Depth 3-1/4"	Ball-Point thru 4/0	9-1/4"	234 mm



GC-300 Ground Clamp  
• 98% Copper Alloy Jaws  
• Fully Insulated Spring



SGC-300 Ground Clamp  
• Steel Body with direct ground through copper alloy jaw  
• SGC-500 w/copper shunt  
• SGC-300 wo/copper shunt



FGC-300 Ground Clamp  
• 98% Copper Alloy  
• 200, 300 & 500 AMP flat jaw

## "C" Type Ground Clamps

Part Number	Model Number	Amperage Capacity	Type Cable Connection	Throat Opening	Throat Depth
9210-1150	GC-600-50	600	1/2" Cap Screw	2-1/2"	1-5/8"
9210-1202	GC-600-TMP	600	TWECO Male Plug	2-1/2"	1-3/8"
9210-1201	GC-600-DBP	600	Double Ball-Point	2-1/2"	1-3/8"



GC-600-50



GC-600-TMP



GC-600-DBP

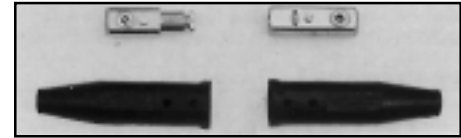
## Cable Connectors / Terminals / Lugs

### Tweco Cable Connectors

Two styles of cable connectors, MPC and MBP/MPC, are available. Both connectors are equipped with heat and oil resistant covers. The MPC connectors are furnished with zinc plated cover and ball-point cable screws. The MBP/MPC connectors are equipped with stainless steel screws to resist corrosion in a hostile environment. Both connectors may be used interchangeably and are interchangeable with older Tweco MBP connectors. The Whip Cable Connector is used when downsizing cable to an electrode holder. It is a No. 2 male connector with cable hole sized to fit 4, 2, 1 or 1/0 cable. Both the 2-1-MPC and the 2-1-MBP/MPC with fit any No. 2 or No. 4 female connector.



2-1-MPC



2-MPC

Part Number	Model Number	Type Cable Connection	Cable Capacity	Std Pkg
<b>MPC SERIES POSITIVE-CAM Mechanical Connection - zinc plated type cable &amp; cover screws</b>				
9425-1100	1-MPC Complete	Single Ball-Point	4, 2, 1	1 ea. Male/Female
9425-1110	1-MPC-1 Male Half	Single Ball-Point	4, 2, 1	Pkg. 2 ea. Male
9425-1120	1-MPC-2 Female Half	Single Ball-Point	4, 2, 1	Pkg. 2 ea. Female
9425-1200	2-MPC Complete	Single Ball-Point	1/0, 2/0, 3/0	1 ea. Male/Female
9425-1210	2-MPC-1 Male Half	Single Ball-Point	1/0, 2/0, 3/0	Pkg. 2 ea. Male
9425-1220	2-MPC-2 Female Half	Single Ball-Point	1/0, 2/0, 3/0	Pkg. 2 ea. Female
9425-1400	4-MPC Complete	Double Ball-Point	3/0 or 4/0	1 ea. Male/Female
9425-1410	4-MPC-1 Male Half	Double Ball-Point	3/0 or 4/0	Pkg. 2 ea. Male
9425-1420	4-MPC-2 Female Half	Double Ball-Point	3/0 or 4/0	Pkg. 2 ea. Female
9425-1140	2-1-MPC Whip	Single Ball-Point	4, 2,1,1/0	Pkg. 2 ea.

### Cable Connector Replacement Parts

Part No.	Model No.	Description
<b>MPC SERIES POSITIVE-CAM - zinc plated type cable &amp; cover screws</b>		
9940-2103	1R-C	Insulating Cover Only, All 1-MPC
9940-2124	24R-MBP	Insulating Cover Only, All 2 & 4 MPC
9940-2100	1-MBP-10	Cable Connection Screw, Zinc Plated All 1-MPC
9910-2124	A-532-24	Cable Connection Screw, Zinc Plated, All 2-MPC
9910-2424	A-14-24	Cable Connection Screw, Zinc Plated, All 4-MPC

Part No.	Model No.	Description
<b>MBP/MPC SERIES POSITIVE-CAM - stainless steel type cable &amp; cover screws</b>		
9940-2103	1R-C	Insulating Cover Only, All 1 -MBP/MPC
9940-2124	24R-MBP	Insulating Cover Only, All 2 & 4 MBP/MPC
9940-2105	1-MPC-10SS	Cable Connection Screw, Stainless Steel, All 1-MBP/MPC
9940-2106	2-MPC-10SS	Cable Connection Screw, Stainless Steel, All 2-MBP/MPC
9940-2107	4-MPC-10SS	Cable Connection Screw, Stainless Steel, All 4-MBP/MPC

### Tweco Terminals and Twecolugs®

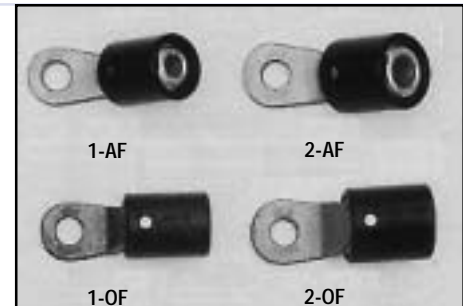
Screw-On Terminals-Fits  
Terminal Size 1/2" NC



Part No.	Model No.	Fits Tweco Conn. No.
9505-1152	2-SF-50	No. 2 & No. 4 Male Half

### Female Terminals

-Stud Hole Size 17/32"



Part No.	Model No.	Accepts Male Ends	Std Pkg
9510-1100	1-AF 45° Angle	1-M, 1-MPC	24
9510-1101	1-OF 180° Offset	1-M, 1-MPC	24
9510-1110	2-AF 45° Angle	2-M, 4-M, 2-MPC	24
9510-1111	2-OF 180° Offset	4-MPC, 2-1-MPC	24

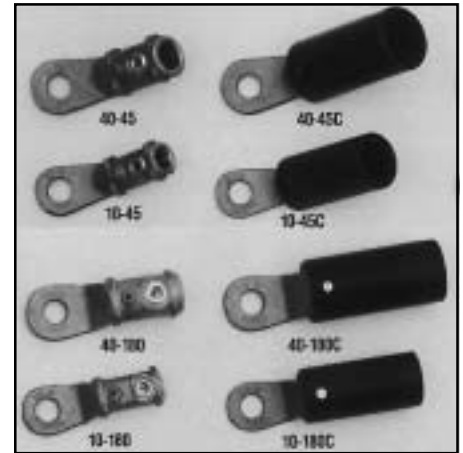
Continued Next Page

## Tweco Terminals and Twecolugs® *Continued*

### Ball-Point Connection Type

-Stud Hole Size 17/32"

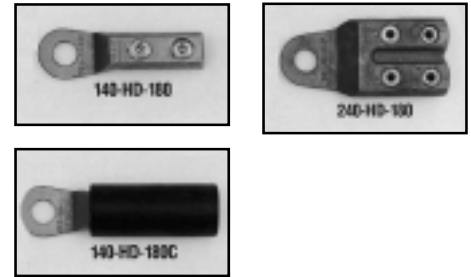
Part No.	Model Number/Description	Cable Capacity	St. Pkg.
9915-1100	10-45 45° Angle, less insulated cover	thru 1/0	12
9515-1102	10-180 180° Angle, less insulated cover	thru 1/0	12
9515-1110	40-45 45° Angle, less insulated cover	thru 4/0	12
9515-1112	40-180 180° Angle, less insulated cover	thru 4/0	12
9515-1101	10-45C 45° Angle, with insulated cover	thru 1/0	12
9515-1103	10-180C 180° Angle, with insulated cover	thru 1/0	12
9515-1111	40-45C 45° Angle, with insulated cover	thru 4/0	6
9515-1113	40-180C 180° Angle, with insulated cover	thru 4/0	6



### Heavy Duty Type

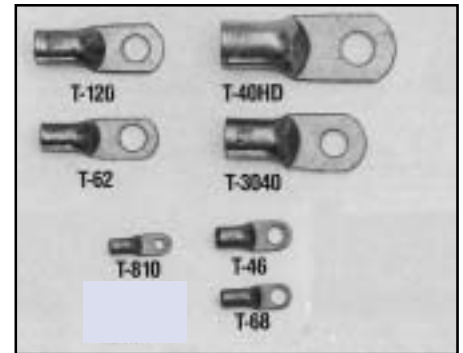
-Mechanical Ball-Point

Part No.	Model No.	Cable Capacity	Size of Stud Hole	English Length	Metric Length
9515-1120	140-HD-180 180° Offset	3/0 & 4/0	21/32"	4-3/8"	111 mm
9515-1121	140-HD-180C w/Insulated Cover 180° Offset	3/0 & 4/0	21/32"	5-1/2"	140 mm
9515-1122	240-HD-180 180° Offset	3/0 & 4/0	21/32"	4-5/8"	131 mm



### Twecolugs® - Crimp or Solder Type (use Tweco "Lug-Set")

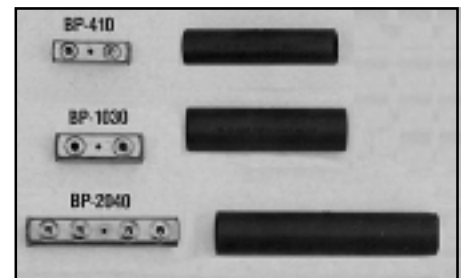
Part No.	Model No.	Welding Cable Size	AMP Rating	Size of Stud Hole	I.D. Solder Socket	St. Pkg.
9520-1104	T-62	6 thru 2	150	17/32"	.461"	50
9520-1105	T-120	1 thru 2/0	225	17/32"	.559"	50
9520-1107	T-3040	3/0 & 4/0	250	17/32"	.660"	25
9520-1109	T-40HD	4/0 Heavy-Duty	325	21/32"	.776"	25
<b>Power Cable Lugs</b>						
9520-1101	T-810	8 thru 10	50	13/64"	.238"	200
9520-1102	T-68	6 thru 8	70	21/64"	.289"	125
9520-1103	T-46	4 thru 6	90	21/64"	.347"	100



### Tweco Cable Splicers

-Ball Point Type

Part No.	Model No.	Cable Capacity	St. Pkg.
9605-1101	BP-410 Ball Point	4,2,1,1/0	12
9605-1103	BP-1030 Ball Point	1/0,2/0,3/0	12
9605-1105	BP-2040 Double Ball Point	2/0,3/0,4/0	6

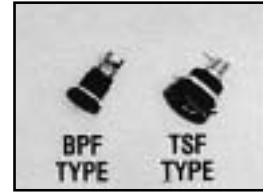


Above illustration shows covers removed; furnished complete w/cover only.

## Panel Receptacles / Mounting Plates / Block & Punch

### Panel Receptacles (use with MPC or MBP/MPC Connectors)

Part Number	Model Number	Fits Tweco Connector	For Cable Size	Cable Attachment
9580-1100	1516-BPF Ball Point	No. 1	4, 2, 1	5/16" Ball Point
9580-1101	114-TSF Threaded	No. 1	4, 2, 1, 1/0	5/16" Thread, Stud
9580-1102	238-TSF Threaded	No. 2, 4	1/0, 2/0, 3/0	3/8" Thread, Stud
9580-1103	2916-BPF Ball-Point	No. 2, 4	1/0, 2/0, 3/0	9/16" Ball Point
9580-1104	212-TSF Threaded	No. 2, 4	1/0, 2/0, 3/0	1/2" - 20 Thread, Stud

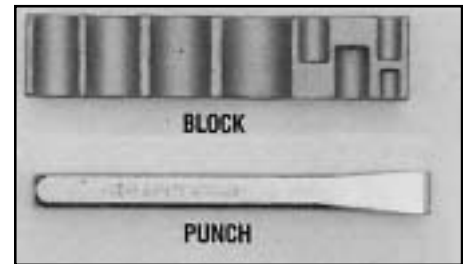


### Replacement Parts

Part No.	Part No.	Description
9910-2124	A-532-24	9/16" Ball Point Screw, use with 1516-BPF
9910-2714	AL-300-12A	7/16" Ball Point Screw, use with 2916-BPF

### Tweco "Lug-set" Block & Punch (For Use With Twecolugs)

Part No.	Part No.	Description
9900-1140	12-BP	Block & Punch



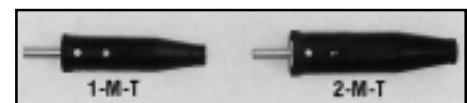
### Jacket Stripping Cable Cutting Hand Tool

Part No.	Part No.	Description
9900-1190	T-908	Tweco Cable Cutting Hand Tool



### Replacement Machine Plugs-Ball Point Connection

Part No.	Plug No.	Taper Length	Taper Dimension	Cable Capacity
9505-1800	1-M-T	1-1/8"	21/64" to 23/64"	4, 2, 1
9505-1801	2-M-T	1-1/8"	21/64" to 23/64"	1/0, 2/0, 3/0



### Receptacle Conversion Adapters

Part No.	Adapter No.	Fits Cam Locking Machine Receptacle	Fits Tweco Male Plug Ends
9505-1811	2-CLC	Large-11/16" I.D.	No. 2-M, 4-M, 2-MPC, 4-MPC

