

**Mini MIG & No. 1 Gun Assemblies**



Mini Mig Gun



No. 1

**MINI MIG GUN ASSEMBLIES WITH 'STANDARD' CONSUMABLES - 160 AMP AIR COOLED**

WITH TWECO REAR CONNECTION (REQUIRES ADAPTER PLUG)		DESCRIPTION	WITH EURO-KWIK REAR CONNECTION	
STOCK NO.	PART NO.		STOCK NO.	PART NO.
1000-1121	23-10	.023/0,6 Wire 10 ft./3 m Cable	N/A	N/A
1000-1131	35-10	.035/0,9 Wire 10 ft./3 m Cable	1000-1631	X35-10
1000-1132	35-12	.035/0,9 Wire 12 ft./4 m Cable	1000-1632	X35-12
1000-1133	35-15	.035/0,9 Wire 15 ft./5 m Cable	1000-1633	X35-15
1000-1141	45-10	.045/1,2 Wire 10 ft./3 m Cable	N/A	N/A
1000-1142	45-12	.045/1,2 Wire 12 ft./4 m Cable	N/A	N/A
1000-1143	45-15	.045/1,2 Wire 15 ft./5 m Cable	N/A	N/A
WITH MILLER REAR CONNECTION		DESCRIPTION	WITH LINCOLN REAR CONNECTION	
STOCK NO.	PART NO.		STOCK NO.	PART NO.
1000-1210	M23-10	.023/0,6 Wire 10 ft./3 m Cable	N/A	N/A
1000-1211	M35-10	.035/0,9 Wire 10 ft./3 m Cable	1000-1231	L35-10
1000-1213	M35-12	.035/0,9 Wire 12 ft./4 m Cable	N/A	N/A
1000-1215	M35-15	.035/0,9 Wire 15 ft./5 m Cable	1000-1233	L35-15
1000-1212	M45-10	.045/1,2 Wire 10 ft./3 m Cable	N/A	N/A
1000-1214	M45-12	.045/1,2 Wire 12 ft./4 m Cable	N/A	N/A
1000-1216	M45-15	.045/1,2 Wire 15 ft./5 m Cable	N/A	N/A

**NO. 1 MIG-GUN ASSEMBLIES WITH 'STANDARD' CONSUMABLES - 160 AMP AIR COOLED**

WITH TWECO REAR CONNECTION (REQUIRES ADAPTER PLUG)		DESCRIPTION	WITH EURO-KWIK REAR CONNECTION	
STOCK NO.	PART NO.		STOCK NO.	PART NO.
1010-1101	110-23	.023/0,6 Wire 10 ft./3 m Cable	N/A	N/A
1010-1111	110-3035	.035/0,9 Wire 10 ft./3 m Cable	N/A	N/A
1010-1112	112-3035	.035/0,9 Wire 12 ft./4 m Cable	N/A	N/A
1010-1113	115-3035	.035/0,9 Wire 15 ft./5 m Cable	N/A	N/A
1010-1121	110-4045	.045/1,2 Wire 10 ft./3 m Cable	1010-1621	X110-4045
1010-1122	112-4045	.045/1,2 Wire 12 ft./4 m Cable	1010-1622	X112-4045
1010-1123	115-4045	.045/1,2 Wire 15 ft./5 m Cable	1010-1623	X115-4045
WITH MILLER REAR CONNECTION		DESCRIPTION	WITH LINCOLN REAR CONNECTION	
STOCK NO.	PART NO.		STOCK NO.	PART NO.
1010-1130	M110-23	.023/0,6 Wire 10 ft./3 m Cable	N/A	N/A
1010-1131	M110-3035	.035/0,9 Wire 10 ft./3 m Cable	N/A	N/A
1010-1133	M112-3035	.035/0,9 Wire 12 ft./4 m Cable	N/A	N/A
1010-1135	M115-3035	.035/0,9 Wire 15 ft./5 m Cable	1010-1145	L115-3035
1010-1132	M110-4045	.045/1,2 Wire 10 ft./3 m Cable	N/A	N/A
1010-1134	M112-4045	.045/1,2 Wire 12 ft./4 m Cable	N/A	N/A
1010-1136	M115-4045	.045/1,2 Wire 15 ft./5 m Cable	N/A	N/A

**No. 2 & No. 3 MIG Gun Assemblies**



No. 2



No. 3

**NO.2 MIG-GUN ASSEMBLIES WITH 'STANDARD' CONSUMABLES - 200 AMP AIR COOLED**

WITH TWECO REAR CONNECTION (REQUIRES ADAPTER PLUG)		DESCRIPTION	WITH EURO-KWIK REAR CONNECTION	
STOCK NO.	PART NO.		STOCK NO.	PART NO.
1020-1111	210-3035	.035/0,9 Wire 10 ft./3 m Cable	1020-1611	X210-3035
1020-1112	212-3035		1020-1612	X212-3035
1020-1113	215-3035		1020-1613	X215-3035
1020-1121	210-4045	.045/1,2 Wire 10 ft./3 m Cable	1020-1621	X210-4045
1020-1122	212-4045		1020-1622	X212-4045
1020-1123	215-4045		1020-1623	X215-4045
WITH MILLER REAR CONNECTION		DESCRIPTION	WITH LINCOLN REAR CONNECTION	
STOCK NO.	PART NO.		STOCK NO.	PART NO.
1020-1130	M210-3035	.035/0,9 Wire 10 ft./3 m Cable	1020-1140	L210-3035
1020-1132	M212-3035		1020-1142	L212-3035
1020-1134	M215-3035		1020-1144	L215-3035
1020-1131	M210-4045	.045/1,2 Wire 10 ft./3 m Cable	1020-1141	L210-4045
1020-1133	M212-4045		1020-1143	L212-4045
1020-1135	M215-4045		1020-1145	L215-4045

**NO.3 MIG-GUN ASSEMBLIES WITH 'STANDARD' CONSUMABLES - 300 AMP AIR COOLED**

WITH TWECO REAR CONNECTION (REQUIRES ADAPTER PLUG)		DESCRIPTION	WITH EURO-KWIK REAR CONNECTION	
STOCK NO.	PART NO.		STOCK NO.	PART NO.
1030-1101	310-3545	.045/1,2 Wire 10 ft./3 m Cable	1030-1601	X310-3545
1030-1102	312-3545		1030-1602	X312-3545
1030-1103	315-3545		1030-1603	X315-3545
1030-1111	310-116	1/16-1,6 Wire 10 ft./3 m Cable	N/A	N/A
1030-1112	312-116		N/A	N/A
1030-1113	315-116		1030-1613	X315-116
WITH MILLER REAR CONNECTION		DESCRIPTION	WITH LINCOLN REAR CONNECTION	
STOCK NO.	PART NO.		STOCK NO.	PART NO.
1030-1130	M310-3545	.045/1,2 Wire 10 ft./3 m Cable	1030-1140	L310-3545
1030-1133	M312-3545		1030-1143	L312-3545
1030-1136	M315-3545		1030-1146	L315-3545



No. 4

**NO.4 MIG-GUN ASSEMBLIES WITH 'STANDARD' CONSUMABLES - 400 AMP AIR COOLED**

<b>WITH TWECO REAR CONNECTION (REQUIRES ADAPTER PLUG)</b>		<b>DESCRIPTION</b>	<b>WITH EURO-KWIK REAR CONNECTION</b>	
STOCK NO.	PART NO.		STOCK NO.	PART NO.
1040-1101	410-3545	.045/1,2 Wire 10 ft./3 m Cable	1040-1601	X410-3545
1040-1102	412-3545	.045/1,2 Wire 12 ft./4 m Cable	1040-1602	X412-3545
1040-1103	415-3545	.045/1,2 Wire 15 ft./5 m Cable	1040-1603	X415-3545
1040-1111	410-116	1/16-1,6 Wire 10 ft./3 m Cable	N/A	N/A
1040-1112	412-116	1/16-1,6 Wire 12 ft./4 m Cable	N/A	N/A
1040-1113	415-116	1/16-1,6 Wire 15 ft./5 m Cable	1040-1613	X415-116
1040-1121	410-564	5/64-2,0 Wire 10 ft./3 m Cable	N/A	N/A
1040-1122	412-564	5/64-2,0 Wire 12 ft./4 m Cable	N/A	N/A
1040-1123	415-564	5/64-2,0 Wire 15 ft./5 m Cable	N/A	N/A
<b>WITH MILLER REAR CONNECTION</b>		<b>DESCRIPTION</b>	<b>WITH LINCOLN REAR CONNECTION</b>	
STOCK NO.	PART NO.		STOCK NO.	PART NO.
1040-1130	M410-3545	.045/1,2 Wire 10 ft./3 m Cable	1040-1140	L410-3545
1040-1133	M412-3545	.045/1,2 Wire 12 ft./4 m Cable	1040-1143	L412-3545
1040-1136	M415-3545	.045/1,2 Wire 15 ft./5 m Cable	1040-1146	L415-3545
1040-1131	M410-116	1/16-1,6 Wire 10 ft./3 m Cable	1040-1141	L410-116
1040-1134	M412-116	1/16-1,6 Wire 12 ft./4 m Cable	1040-1144	L412-116
1040-1137	M415-116	1/16-1,6 Wire 15 ft./5 m Cable	1040-1147	L415-116
1040-1132	M410-564	5/64-2,0 Wire 10 ft./3 m Cable	N/A	N/A
1040-1135	M412-564	5/64-2,0 Wire 12 ft./4 m Cable	N/A	N/A
1040-1138	M415-564	5/64-2,0 Wire 15 ft./5 m Cable	N/A	N/A

**No. 5 MIG Gun Assemblies**



No. 5

**NO.5 MIG-GUN ASSEMBLIES WITH 'STANDARD' CONSUMABLES - 500 AMP AIR COOLED**

WITH TWECO REAR CONNECTION (REQUIRES ADAPTER PLUG)		DESCRIPTION	WITH EURO-KWIK REAR CONNECTION	
STOCK NO.	PART NO.		STOCK NO.	PART NO.
1050-1101	510-3545	.045/1,2 Wire 10 ft./3 m Cable	N/A	N/A
1050-1102	512-3545	.045/1,2 Wire 12 ft./4 m Cable	N/A	N/A
1050-1103	515-3545	.045/1,2 Wire 15 ft./5 m Cable	N/A	N/A
1050-1111	510-116	1/16-1,6 Wire 10 ft./3 m Cable	N/A	N/A
1050-1112	512-116	1/16-1,6 Wire 12 ft./4 m Cable	N/A	N/A
1050-1113	515-116	1/16-1,6 Wire 15 ft./5 m Cable	1050-1613	X515-116
1050-1131	510-332	3/32-2,4 Wire 10 ft./3 m Cable	N/A	N/A
1050-1132	512-332	3/32-2,4 Wire 12 ft./4 m Cable	N/A	N/A
1050-1133	515-332	3/32-2,4 Wire 15 ft./5 m Cable	N/A	N/A
WITH MILLER REAR CONNECTION		DESCRIPTION	WITH LINCOLN REAR CONNECTION	
STOCK NO.	PART NO.		STOCK NO.	PART NO.
1050-1172	M515-3545	.045/1,2 Wire 15 ft./5 m Cable	N/A	N/A
1050-1161	M510-116	1/16-1,6 Wire 10 ft./3 m Cable	N/A	N/A
1050-1167	M512-116	1/16-1,6 Wire 12 ft./4 m Cable	N/A	N/A
1050-1173	M515-116	1/16-1,6 Wire 15 ft./5 m Cable	N/A	N/A
1050-1175	M515-332	3/32-2,4 Wire 15 ft./5 m Cable	N/A	N/A

Note: All No.5 Mig-Guns are furnished with 5" Radius conductor tubes.



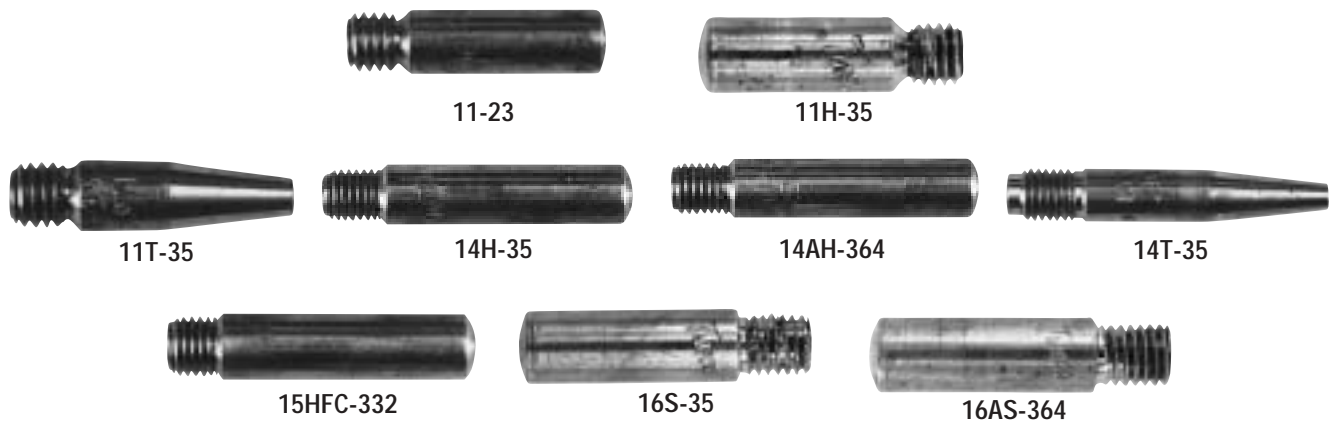
No. 6

**NO.6 MIG-GUN ASSEMBLIES WITH 'STANDARD' CONSUMABLES - 600 AMP AIR COOLED**

WITH TWECO REAR CONNECTION (REQUIRES ADAPTER PLUG)		DESCRIPTION	WITH EURO-KWIK REAR CONNECTION	
STOCK NO.	PART NO.		STOCK NO.	PART NO.
1060-1207	615-116	1/16-1,6 Wire 15 ft./5 m Cable	N/A	N/A
1060-1217	615-332	3/32-2,4 Wire 15 ft./5 m Cable	N/A	N/A
WITH MILLER REAR CONNECTION		DESCRIPTION	WITH LINCOLN REAR CONNECTION	
STOCK NO.	PART NO.		STOCK NO.	PART NO.
1060-1227	M615-3545	.045/1,2 Wire 15 ft./5 m Cable	N/A	N/A
1060-1232	M615-116	1/16-1,6 Wire 15 ft./5 m Cable	N/A	N/A
1060-1242	M615-332	3/32-2,4 Wire 15 ft./5 m Cable	N/A	N/A

Note: All No.6 Mig-Guns are furnished with 5" Radius conductor tubes.

For All Guns - Standard, Tapered & Heavy Duty Styles



WIRE SIZE INCHES/ METRIC	TIP I.D. INCHES/ METRIC	MINI & NO. 1			NO. 2, 3, & 4			NO. 5		NO. 6
		STANDARD	OPTIONAL HEAVY DUTY	OPTIONAL TAPERED	STANDARD	OPTIONAL HEAVY DUTY	OPTIONAL TAPERED	STANDARD RECESS	OPTIONAL 1/8" RECESS	STANDARD 3/8" TIP H D TIP
.023" 0,6 mm	.031" 0,79 mm	11-23 1110-1100	N/A	11T-23 1110-1300	14-23 1140-1100	N/A	14T-23 1140-1300	N/A	N/A	N/A
.030" 0,8 mm	.038" 0,97 mm	11-30 1110-1101	11H-30 1110-1201	11T-30 1110-1301	14-30 1140-1101	N/A	14T-30 1140-1301	N/A	N/A	N/A
.035" 0,9 mm	.044" 1,12 mm	11-35 1110-1102	11H-35 1110-1202	11T-35 1110-1302	14-35 1140-1102	14H-35 1140-1202	14T-35 1140-1302	15H-35 1150-1202	N/A	16S-35** 1160-1102
.040" 1,0 mm	.048" 1,22 mm	11-40 1110-1103	11H-40 1110-1203	11T-40 1110-1303	14-40 1140-1103	14H-40 1140-1203	14T-40 1140-1303	N/A	N/A	16S-40** 1160-1103
.045" 1,2 mm	.054" 1,37 mm	11-45 1110-1104	11H-45 1110-1204	11T-45 1110-1304	14-45 1140-1104	14H-45 1140-1204	14T-45 1140-1304	15H-45 1150-1204	15HFC-45 1150-1254	16S-45** 1160-1104
.052" 1,3 mm	.064" 1,65 mm	N/A	N/A	N/A	14-52 1140-1105	14H-52 1140-1205	14T-52 1140-1305	15H-52 1150-1205	15HFC-52 1150-1255	16S-52** 1160-1105
1/16" 1,6 mm	.073" 1,85 mm	N/A	N/A	N/A	14-116 1140-1106	14H-116 1140-1206	14T-116 1140-1306	15H-116 1150-1206	15HFC-116 1150-1256	16S-116** 1160-1106
5/64" 2,0 mm	.090" 2,29 mm	N/A	N/A	N/A	14-564 1140-1109	14H-564 1140-1209	N/A	15H-564 1150-1209	15HFC-564 1150-1259	16S-564** 1160-1109
3/32" 2,4 mm	.106" 2,67 mm	N/A	N/A	N/A	N/A	N/A	N/A	15H-332 1150-1210	15HFC-332 1150-1260	16S-332** 1160-1110
7/64" 2,8 mm	.120" 3,05 mm	N/A	N/A	N/A	N/A	N/A	N/A	15H-764 1150-1211	15HFC-764 1150-1261	16S-764** 1160-1111
1/8" 3,2 mm	.144" 3,66 mm	N/A	N/A	N/A	N/A	N/A	N/A	15H-18 1150-1212	15HFC-18 1150-1262	16S-18** 1160-1112
3/64"AL 1,2 mm	.059" 1,50 mm	N/A	11AH-364 1110-1213	N/A	14A-364 1140-1113	14AH-364 1140-1213	N/A	15AH-364 1150-1213	N/A	16AS-364** 1160-1113
1/16"AL 1,6 mm	.082" 1,85 mm	N/A	N/A	N/A	N/A	14AH-116 1140-1214	N/A	15AH-116 1150-1214	15AHFC-116 1150-1264	16AS-116** 1160-1114

N/A = NOT AVAILABLE \*\* 16S Tips—when used in No. 5 Mig-Guns require a 55S style diffuser. Use 55S-SWL or 55S-HL for 5/32" tip recess. Use 55S-SW or 55S-H for 3/8" tip recess.

## Standard Nozzles & Nozzle Insulators for all Guns



21-50



21T-37



22T-37-SS



21-50-F



22-62



23-62-F



22-50-SS



23-62



23T-37

GUN MODEL	NOZZLE STYLE	INSULATOR	3/8"/9,5 mm BORE	1/2"/12,7 mm BORE	5/8"/15,9 mm BORE	3/4"/19,1 mm BORE
<b>21 SERIES</b>						
Mini-Mig-Gun (Standard)	(Self-Insulated) (tip flush)	" "	21-37-F 1210-1102	21-50-F 1210-1112	21-62-F 1210-1122	N/A
No. 1 (Standard)	(Self-Insulated) (1/8" tip recess)	N/A	21-37 1210-1100	21-50 1210-1110	21-62 1210-1120	N/A
	Optional (Tapered) (Self-Insulated) (1/8" tip recess) (tip flush)	" "	21T-37 1210-1300 21T-37-F 1210-1302	N/A	N/A	N/A
<b>22 SERIES</b>						
No.2 (Standard)	(Adjustable) (recess to projection)	0032 1320-1100	N/A	22-50 1220-1110	22-62 1220-1120	N/A
	Optional (Short-Stop) (1/8" tip recess)	" "	22-37-SS 1220-1301	22-50-SS 1220-1111	22-62-SS 1220-1121	N/A
	Optional (Tapered) (tip flush)	" "	22T-37-SS 1220-1522	N/A	N/A	N/A
<b>23 SERIES</b>						
No. 3 (Standard)	(Self-Insulated) (1/8" tip recess)	N/A	23-37 1230-1100	23-50 1230-1110	23-62 1230-1120	23-75 1230-1130
	Optional (Self-Insulated) (tip flush)	N/A	23-37-F 1230-1102	23-50-F 1230-1112	23-62-F 1230-1122	23-75-F 1230-1132
	Optional (Heavy Duty) (Self-Insulated) (1/8" tip recess)	N/A	N/A	23H-50 1230-1210	23H-62 1230-1220	23H-75 1230-1230
	Optional (Heavy Duty) (Self-Insulated) (tip flush)	N/A	N/A	N/A	23H-62-F 1230-1222	N/A

Standard Nozzles & Nozzle Insulators - All Guns



24A-50



24AH-62



24A-62-SS



24AT-37-SS



24CT-62-S



24CT-62-F



25I-75



34A



34CT



35CT

GUN MODEL	NOZZLE STYLE	INSULATOR	3/8"/9,5 mm BORE	1/2"/12,7 mm BORE	5/8"/15,9 mm BORE	3/4"/19,1 mm BORE
<b>24 SERIES</b>						
No. 4 (Standard)	(Adjustable) (recess to projection)	034A 1340-1100	N/A	24A-50 1240-1110	24A-62 1240-1120	24A-75 1240-1130
	Optional (Short Stop) (1/8" tip recess)	034A 1340-1100	24A-37-SS 1240-1101	24A-50-SS 1240-1111	24A-62-SS 1240-1121	24A-75-SS 1240-1131
	Optional (SS Tapered) (1/8" tip recess)	034A 1340-1100	24AT-37-SS 1240-1301	N/A	N/A	N/A
	Optional (Heavy Duty) (adjustable)	034A 1340-1100	N/A	24AH-50 1240-1210	24AH-62 1240-1220	24AH-75 1240-1230
	Optional (Heavy Duty) (short stop)	034A 1340-1100	N/A	24AH-50-SS 1240-1211	24AH-62-SS 1240-1221	24AH-75-SS 1240-1231
	Optional (Coarse Thread) (1/8" tip recess)	34CT 1340-1400	24CT-37-S 1240-1404	24CT-50-S 1240-1414	24CT-62-S 1240-1424	24CT-75-S 1240-1434
	Optional (Coarse Thread) (tip flush)	34CT 1340-1400	N/A	24CT-50-F 1240-1412	24CT-62-F 1240-1422	N/A
	Optional (Coarse Thread) (1/2" tip recess)	34CT 1340-1400	N/A	N/A	24CT-62-R 1240-1423	24CT-75-R 1240-1433
<b>25 SERIES</b>						
No. 5 (Standard)	(Coarse Thread) (1/8" tip recess)	35CT 1350-1400	N/A	25CT-50 1250-1410	25CT-62 1250-1420	25CT-75 1250-1430
	Optional (Self-Insulated) 1/8" tip recess	N/A	N/A	N/A	25I-62 1250-1120	25I-75 1250-1130
<b>26 SERIES</b>				<b>5/8"/15,9 mm BORE</b>	<b>3/4"/19,1 mm BORE</b>	<b>7/8"/22 mm BORE</b>
No. 6 (Standard)	(Self-Insulated) 1/8" tip recess	N/A	26I-62 1260-1120	26I-75 1260-1130	26I-87 1260-1140	N/A
	Optional (Coarse Thread) (1/8" tip recess)	36CT	N/A	26CT-62 1260-1420	26CT-75 1260-1430	N/A

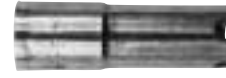
## Optional Arc Spot - Nozzles & Standards Diffusers



25CT-125-FAS



22-62-OAS



21-62-FAS

TYPE	MINI & NO. 1	NO. 2	NO. 3	NO. 4	NO. 5
Flat Arc Spot	21-62-FAS 1210-1520 (5/8" Bore)	22-62-FAS 1220-1520 (5/8" Bore)	23-75-FAS 1230-1530 (3/4" Bore)	24A-62-FAS 1240-1520 (5/8" Bore) 24A-75-FAS 1240-1530 (3/4" Bore) 24A-100-FAS 1240-1550 (1" Bore)	25CT-125-FAS 1250-1560 (1-1/4" Bore) 25CT-162-FAS 1250-1570 (1-5/8" Bore)

## Standard Diffusers



35-50



0051



0052



0055



55SW



55S-SWL

MINI-MIG-GUN	NO. 1	NO. 2	NO. 3 & 4	NO. 5		
35-50 1500-1100 (Standard)	0051 1510-1101 (Standard)	0052 1520-1101 (Standard)	054A 1540-1103 (Standard)	55SW 1550-1101 (Note: 1)	55S-SW 1550-1110 (Note: 1)	1550-1120 (Note: 1)
35-50A 1500-1101 (use with AL Wire)	51-23 1510-1100 (use with .023 Wire)	52-23 1520-1100 (use with .023 Wire)	054K with slip in tips	0055 1550-1100 (Note: 2)	(Use with 16S tips = 3/8 tip recess) 55S-H 1550-1111 (Note: 4) 55S-SWL	(Use with 16S tips = 1/8 tip recess) 55S-HL1550-1121
		52FN 1520-1102 (use with No. 3 & 4 nozzles)		055H 1550-1102 (Note: 3)		

Diffusers for No. 5 & 6 Mig-Guns must be used with conduits as follows:

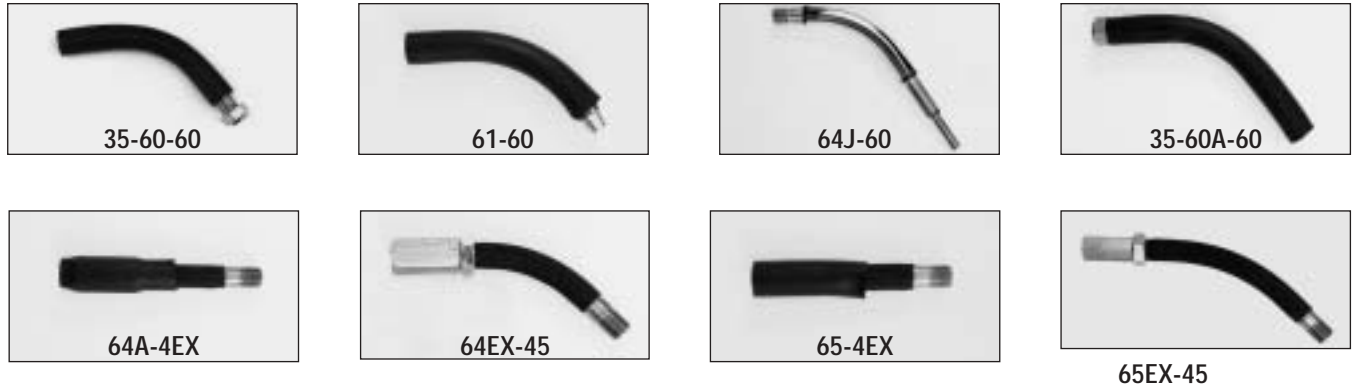
Note: 1 = 45-3545, 45-116, 45N-3545

Note: 2 = 45-564, 45N-116

Note: 3 = 45H-332, 45H-764, 45H-18

Note: 4 = All Note 2 & 3 conduits

Standard Conductor Tubes



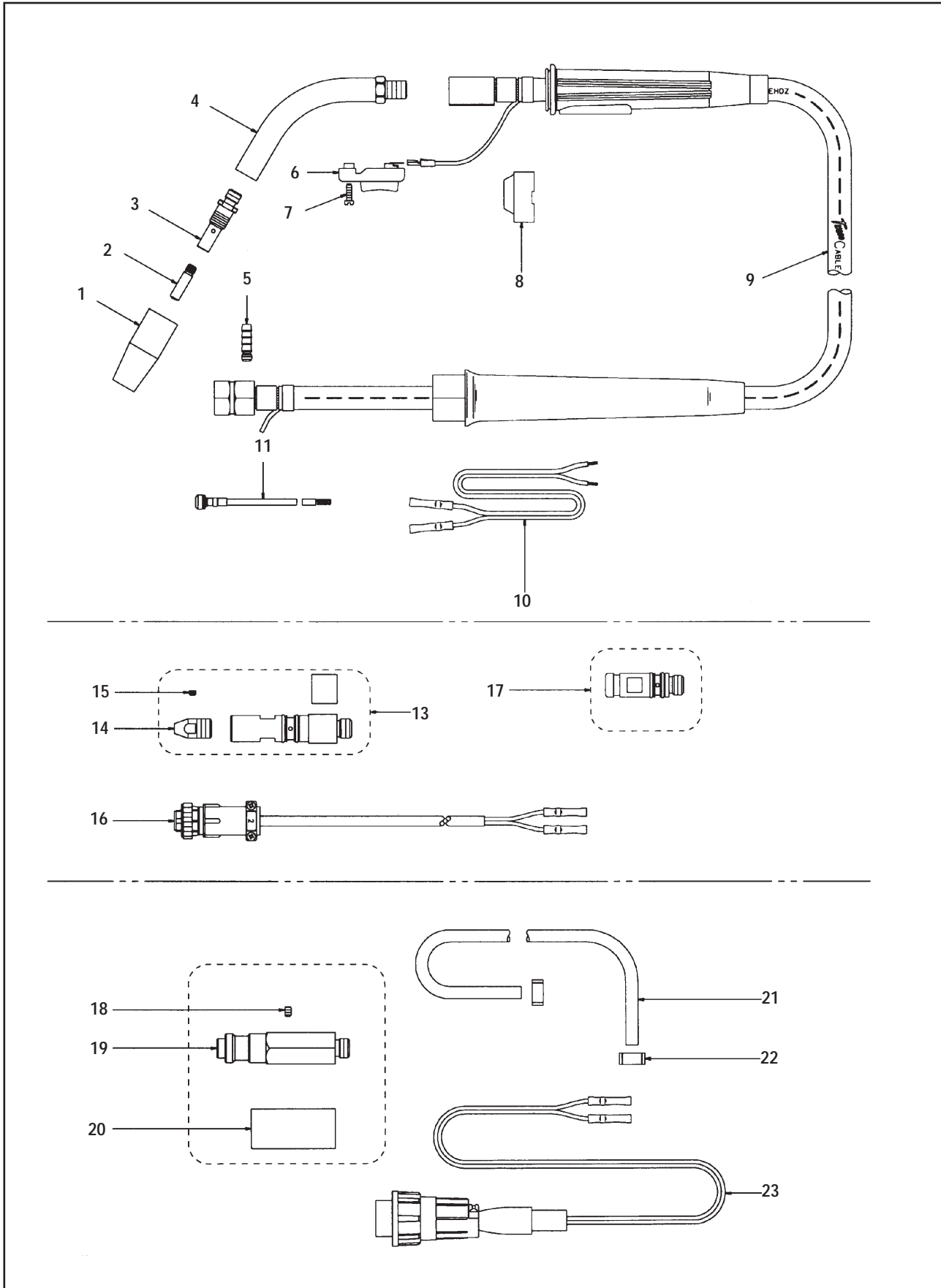
DEGREE/BEND	MINI	NO. 1	NO. 2	NO. 3	NO. 4	NO. 5	NO. 6
						5" RADIUS	5" RADIUS
45°	35-60-45 1600-1101	61-45 1610-1101	62J-45 1620-1300	63J-45 1630-1110	64J-45 1640-1105	65J-45 1650-1110	66J-45 1660-1825
60° (Standard)	35-60-60 1600-1102	61-60 1610-1102	62J-60 1620-1301	63J-60 1630-1111	64J-60 1640-1106	65J-60 1650-1111	66J-60 1660-1826

OPTIONAL STANDARD CONDUCTOR TUBES

MINI-MIG-GUN		CONDUCTOR TUBE EXTENSIONS					
			NO. 3 & 4	NO. 5		NO. 3 & 4	NO. 5
60° For use with Aluminum Wire	35-60A-60 1600-1002	Extension 4" 180°	64A-4EX 1640-1301	65-4EX 1650-1301	Extension 45°	64EX-45 1640-1311	65EX-45 1650-1311
Flexible Conductor Tube	35-60-F 1600-1140	Extension 6" 180°	64A-6EX 1640-1302	65-6EX 1650-1302	Extension 60°	64EX-60 1640-1312	65EX-60 1650-1312
		Extension 8" 180°	64A-8EX 1640-1303	65-8EX 1650-1303	Extension 80°	64EX-80 1640-1313	

Note: Extensions are designed to fit standard conductor tubes. Conduits must be replaced when installing conductor tube extensions.

Mini MIG Gun Replacement Parts

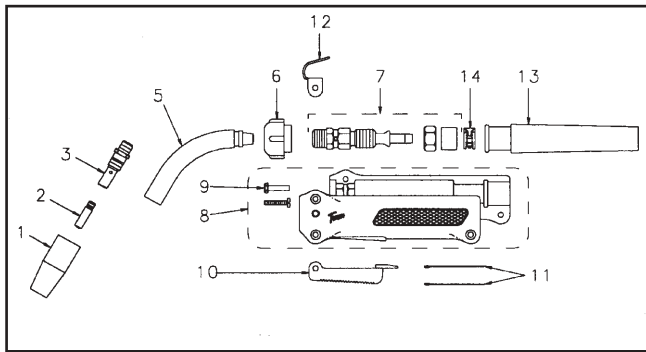


## Mini MIG Gun Replacement Parts

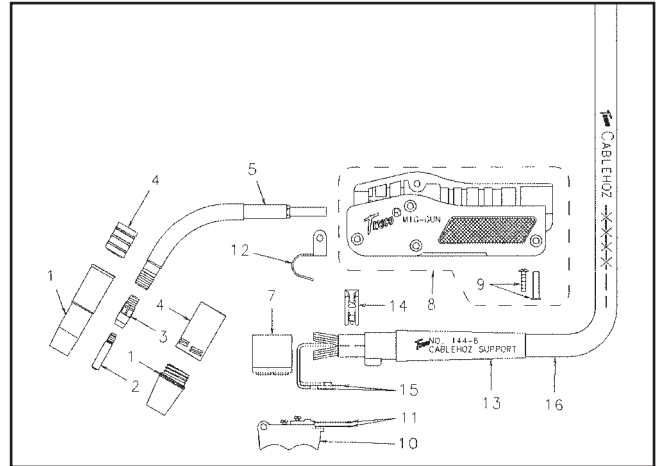
ITEM NO	STOCK NO	PART NO	DESCRIPTION
1	S/C	S/C	NOZZLES
2	S/C	S/C	CONTACT TIPS
3	S/C	S/C	DIFFUSERS
4	S/C		S/C CONDUCTOR TUBES
5	2000-2081	35-80A-1	Handle Cap
6	2000-2090	35-90	Trigger
7	2040-2097	94D-1	Screw
8	1700-2126	35-010A	Cable Assembly 10 ft. Cable with Handle & Support
8	1700-2127	35-012A	Cable Assembly 12 ft. Cable with Handle & Support
8	1700-2128	35-015A	Cable Assembly 15 ft. Cable with Handle & Support
8	1700-2129	35-020A	Cable Assembly 20 ft. Cable with Handle & Support
9	2000-2175	35-170-5	Gas Nipple
10	2000-2352	35K-350-1	Control Wire
11	S/C	S/C	CONDUITS
12	2000-2810	170M	Miller Connector Plug
13	2040-2184	174M-N	Miller Connector Plug End Cap
14	2040-2044	044C	Set Screw
15	2602-2402	MK-354-M	Miller Control Wire Plug Assembly
16	2000-2169	35K-174C	Tweco Standard Connector Plug
17	2000-2811	170L	Lincoln SP100 Connector Plug
18	2040-2044	044C	Set Screw
19	2641-2030	TLAK-352	Lincoln SP200 Connector Plug
20	2642-2210	LAK-352-1	Lincoln Connector Plug Insulator
21	2602-2303	MK-353-24	Gas Hose, 18"
22	2642-2302	AK-353-2A	Hose Clamp
23	2000-2354	35SP-354	Lincoln Control Wire Assembly

S/C = See Consumable Parts Listing

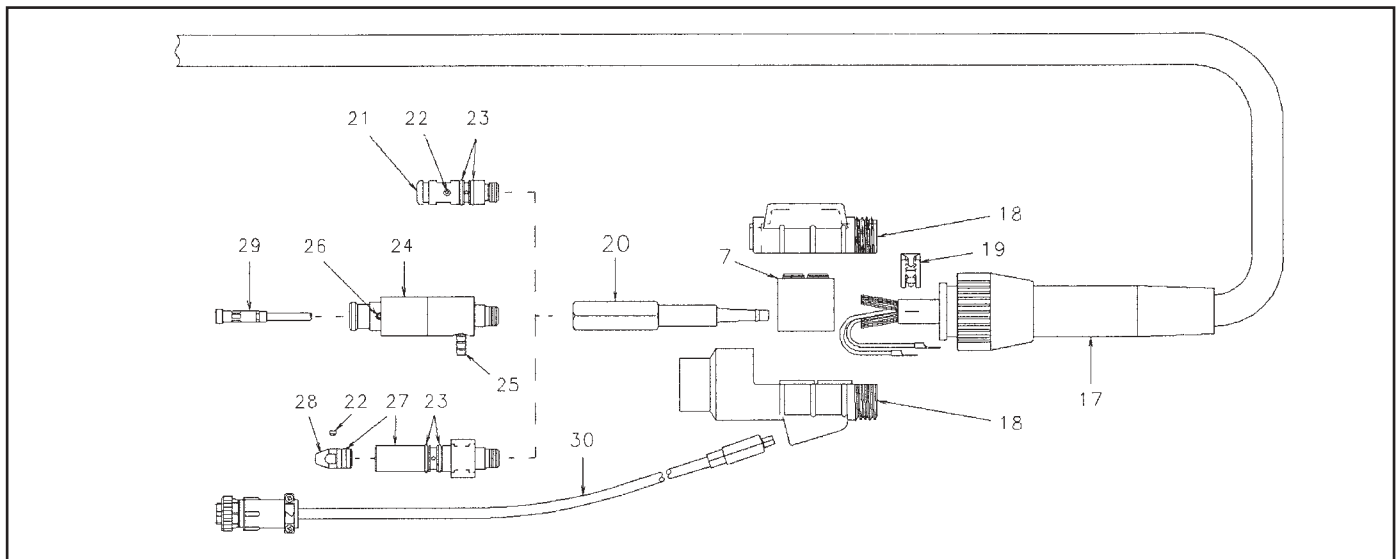
**No. 1, 2, 3, 4, 5 & 6 MIG Gun Replacement Parts**



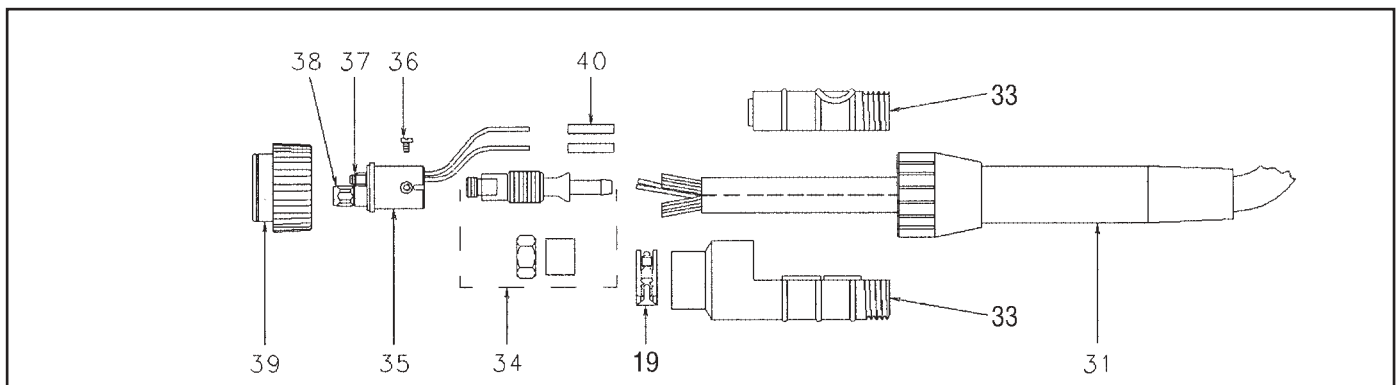
NO. 1 MIG GUN



NO. 2, 3, 4, 5, & 6 MIG GUN



ALL TWECO, MILLER & LINCOLN DIRECT PLUG MIG GUNS



ALL EURO-KWIK MIG GUNS

**No. 1, 2, 3, 4, 5 & 6 MIG Gun Replacement Parts**

NO.	DESCRIPTION	NO. 1	NO. 2	NO. 3	NO. 4	NO. 5	NO. 6	
1	NOZZLES	Standard Consumable Parts						
2	CONTACT TIPS	Standard Consumable Parts						
3	DIFFUSERS	Standard Consumable Parts						
4	NOZZLE INSULATORS	Standard Consumable Parts						
5	CONDUCTOR TUBES	Standard Consumable Parts						
6	Conductor Tube Retaining Nut	061R 2010-2061	N/A					
7	Front Power Connector	101R 2010-2103	0102 2020-2102		0104 2040-2104			
7	Rear Power Connector	0104 2040-2104						
8	Handle	0081 2010-2081	0083 2030-2083		084A 2040-2084	0085 2050-2085		
9	Handle Binder Post & Screw		122FM 2020-2122		124FM 2040-2124			
10	Trigger Assy	0091 2010-2091	0092 2020-2092		094R 2040-2096			
11	Trigger Blades (2 ea.)	091C 2010-2093	092C 2020-2094		094C 2040-2093			
12	Gun Hanger	0152 2020-2152			0154 2040-2154			
13	Front Cable Support	141-6 2010-2141	142-6 2020-2142		144-6 2040-2144	145-6 2050-2145		
14	Front Cable Clamp	132-12 2020-2132			134-14 2040-2134			
15	Front Control Terminals	244DS 2040-2245	0244 2040-2244					
16	Cablehoz, per ft.	0200 1720-2100		0300 1730-2100	0400 1740-2100	0500 1750-2100	600S 1760-2100	
17	Rear Support (except Euro-Kwik)	350R-230-10 2035-2235						
18	Rear Case (except Euro-Kwik)	M6RC 2060-2018						
19	Rear Cable Clamp	132-12 2020-2132		134-14 2040-2134				
20	Power Cable Adapter (except Euro-Kwik)	M170-2 2020-2171						
21	Tweco Connector Plug	350-174 2035-2174						
22	Set Screw	044C 2040-2044						
23	O-rings	0224 2040-2224				0225 2050-2225		
24	Lincon Connector Plug Direct Plug Gun	174TL-L 2035-2132				EL176-L 2060-2624		
25	Gas Nipple	35-170-5 2000-2175						
26	Set Screw	044C 2040-2044						

## No. 1, 2, 3, 4, & 5 MIG Gun Replacement Parts

NO.	DESCRIPTION	NO. 1	NO. 2	NO. 3	NO. 4	NO. 5	NO. 6
27	Miller Connector Plug Direct Plug Gun		174TL-M 2035-2131			EL176-M 2060-2625	
28	Miller Connector Plug End Cap		174M-N 2040-2184			175M-N 2050-2178	
29	CONDUIT	See Following Page					
30	Tweco Control Wire Plug, not furnished with gun			AK-354 2642-2400			
30	Lincoln Control Wire Plug, furnished with direct plug gun			LAK-354 2642-2450			
30	Miller Control Wire Plug, furnished with direct plug gun			MSAK-354 2642-2470			
31	REAR Support (Euro-Kwik Guns)			350R-230-10 2035-2235			
33	REAR Case (Euro-Kwik Guns)			X6RC 2060-2006			
34	Power Connection (Euro-Kwik Guns)		172X-M 2020-2181			176X-M 2060-2181	
35	REAR Connector (Euro-Kwik Guns)			174EX-1 2040-2276			
36	Screw			4M-S 2011-2004			
37	O-ring Euro-Kwik Guns			174EX-1G 2040-2282			
38	Conduit Cap Euro-Kwik Guns			174EX-1C 2040-2279			
39	Connector Nut Euro-Kwik Guns			174X-2 2040-2177			
40	Butt Connectors			35-350-1 2000-2351			

**Wire Conduits For All Guns**

WIRE SIZE	MINI-MIG-GUN (ALL MODELS)		NO. 1 & 2 (ALL MODELS)		NO. 3 & 4 (ALL MODELS & NO.5 X-GUNS)		NO. 5 & 6 (ALL EXCEPT X-GUNS)	
	15 ft./5 m	20 ft./6 m	15 ft./5 m	25 ft./7,6 m	15 ft./5 m	25 ft./7,6 m	15 ft./5 m	25 ft./7,6 m
.023 0,6 mm	23-40-15 1400-1123	N/A	42-23-15 1420-1103	N/A	N/A	N/A	N/A	N/A
.030 - .035 0,8 - 0,9 mm	35-40-15 1400-1133	35-40-20 1400-1134	42-3035-15 1420-1113	42-3035-25 1420-1115	N/A	N/A	N/A	N/A
.040 - .045 1,0 - 1,2 mm	45-40-15 1400-1143	45-40-20 1400-1144	42-4045-15 1420-1123	42-4045-25 1420-1125	N/A	N/A	N/A	N/A
.035 - .045 0,9 - 1,2 mm	N/A	N/A	N/A	N/A	44-3545-15 1440-1103	44-3545-25 1440-1105	45-3545-15 1450-1103	45-3545-25 1450-1105
.052 - 1/16 1,3 - 1,6 mm	N/A	N/A	N/A	N/A	44-116-15 1440-1113	44-116-25 1440-1115	45-116-15 1450-1113	45-116-25 1450-1115
5/64 2,0 mm	N/A	N/A	N/A	N/A	44-564-15 1440-1123	44-564-25 1440-1125	45-564-15 1450-1123	45-564-25 1450-1125
3/32 2,4 mm	N/A	N/A	N/A	N/A	N/A	N/A	45H-332-15 1450-1133	N/A
7/64 2,8 mm	N/A	N/A	N/A	N/A	N/A	N/A	45H-764-15 1450-1143	N/A
1/8 3,2 mm	N/A	N/A	N/A	N/A	N/A	N/A	45H-18-15 1450-1153	N/A
.030 - .035 AL 0,8 - 0,9 mm	35TF-40-10** 1400-1031	N/A	42N-3545-15 1420-1003	N/A	44N-3545-15 1440-1003	N/A	45N-3545-15 1450-1003	N/A
.040 - 3/64 AL 1,0 - 1,2 mm	45TF-40-10** 1400-1041	N/A	42N-3545-15 1420-1003	N/A	44N-3545-15 1440-1003	N/A	45N-3545-15 1450-1003	N/A
1/16 AL 1,6 mm	N/A	N/A	N/A	N/A	44N-116-15 1440-1012	N/A	45N-116-15 1450-1013	N/A

\*\*TF Liners Not Recommended for Lengths over 10 ft./3 m



35TF-40-10



42-3035-15



44-3545-15